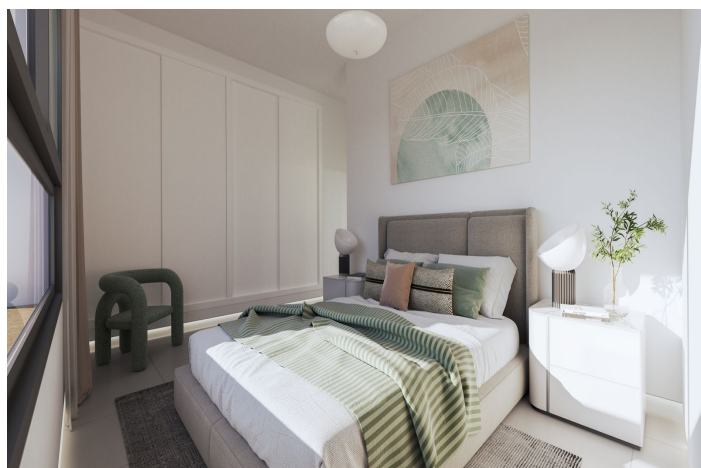




Middle Floor Apartment for sale in Torrox

300,000 €

Reference: R4940749 Bedrooms: 2 Bathrooms: 2 Plot Size: 109m² Build Size: 89m² Terrace: 20m²





Costa del Sol East, El Morche

We present the residential complex MARINSA ALTAIR located in the eastern extension of El Morche (Torrox-Costa), 112 homes of 1, 2 and 3 bedrooms, different typologies, to choose the best option that suits your needs.

Ground floor flats with large terraces, first and first floors with glass balustrades and penthouses with solariums with exceptional views.

Features of these include: fitted kitchens (see equipment); bathrooms with furniture, mirror and shower screen; automated blinds in bedrooms and living room; porcelain floors; built-in wardrobes; pre-installation of air conditioning; hot water production system using high-efficiency heat pump equipment, intelligent hanging toilet in master bedroom bathroom, ambient lighting in skirting boards in bedrooms ... and much more.

All properties include parking and storage.

The complex is gated with swimming pools, paddle tennis court and children's playground and is a stone's throw from the beautiful beaches of El Morche.

Prices from:

1 bedroom flat from 200,000€ - 268.000€

2 bedroom flat from 294.000€ - 402,000€

3 bedroom flat from 344,000€ - 510,000€

Contact us today for more information or to schedule a viewing, this can also be done virtually.

At AbraCasaBra Real Estate we don't sell houses, we realise dreams.

All material is based on information AbraCasaBra Real Estate deems reliable, but because third parties have provided this information, AbraCasaBra Real Estate cannot guarantee its accuracy or completeness.

This offer is subject to errors, omissions and price changes or withdrawal without notice. Availability after agreement.

In accordance with the Junta de Andalucía 218/2005 decree of 11 October, clients are informed that the price excludes 10% VAT, property registration and notary fees. Brokerage fees are included.



Features:

Features

Covered Terrace
Lift
Near Transport
Private Terrace
Satellite TV
Storage Room
Ensuite Bathroom
Double Glazing
Fitted Wardrobes
WiFi
Utility Room
Barbeque
Access for people with reduced mobility
Solarium
Restaurant On Site
Paddle Tennis
Tennis Court
Basement

Views

Sea
Mountain
Garden
Street
Urban
Beach

Pool

Communal
Children`s Pool

Garden

Communal
Private
Easy Maintenance

Utilities

Electricity
Drinkable Water
Gas
Telephone

Orientation

East

Setting

Beachside
Urbanisation
Close To Shops
Close To Schools
Close To Sea
Beachfront
Marina

Furniture

Not Furnished

Security

Gated Complex
Alarm System
Entry Phone

Category

Holiday Homes
Investment
Luxury
New Development
Beachfront

Climate Control

Air Conditioning
Cold A/C
Hot A/C

Condition

Excellent
New Construction

Kitchen

Fully Fitted

Parking

Underground
Garage
Private
Covered