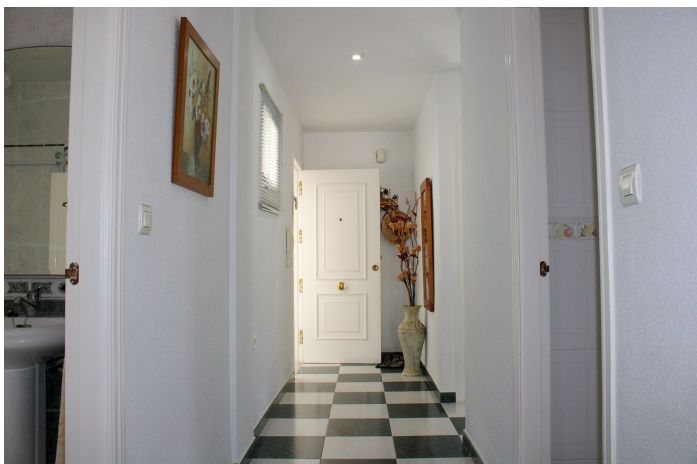


Apartamento en planta alta en venta en Salobreña

299.000 €

Referencia: R4837966 Dormitorios: 3 Baños: 2 Construido: 106m²



Costa Tropical, Salobreña

Exclusive Apartment with Sea Views and Close to the Beach – Salobreña

Discover this spacious and well-maintained bright apartment with breathtaking sea views and views of Sierra Nevada, located on the top (5th) floor. Just 3 minutes away from Salobreña's stunning beach and charming promenade. The complex also offers a large communal pool and a separate children's pool – perfect for relaxation and family fun.

Upon entering the apartment, you are welcomed by a hallway that connects the different areas of the home. To the left, you'll find the first of two modern bathrooms and the first of three bedrooms, all with built-in wardrobes. On the right side, there are two more bedrooms, one of which offers beautiful views of Sierra Nevada.

The spacious and fully equipped kitchen includes new appliances such as a fridge/freezer and a washer-dryer, both still under warranty. Adjacent to the kitchen is a separate laundry room. The kitchen also has a serving hatch opening to the large living room, from which you access two sunny terraces with stunning views.

The apartment is sold fully furnished and includes a private parking space in the garage, as well as a large storage room – ideal for sports equipment storage.

Salobreña is known for its subtropical climate and its proximity to both Almuñécar and Motril, where you can find a wide range of services and entertainment. A 15-minute drive takes you to an 18-hole golf course, and Malaga airport is just over an hour away. For winter sports enthusiasts, the ski slopes of Sierra Nevada are just 1.5 hours away by car, making this home perfect year-round – you get the best of both worlds.

Contact us today for a viewing – your dream apartment awaits!

Características:

Características

Terraza

Elevar

Transporte cercano

Terraza

Trastero

Baño privado

Armarios empotrados

Acceso para personas con movilidad reducida

Solárium

Pista de tenis

Puntos de vista

Mar

Montaña

Piscina

Comunal

Children`s Pool

Jardín

Comunal

Utilidades

Electricidad

Orientación

Oeste

Sur

Sur oeste

Configuración

Cerca del golf

Urbanización

Cerca de las tiendas

Cerca del mar

Cerca de la ciudad

Ciudad

Cerca del esquí

Muebles

Completamente Amueblada

Seguridad

Complejo cerrado

Teléfono de entrada

Categoría

Reventa

Control climatico

Aire acondicionado

Condición

Good

Cocina

Fully Fitted

Estacionamiento

Underground

Cochera