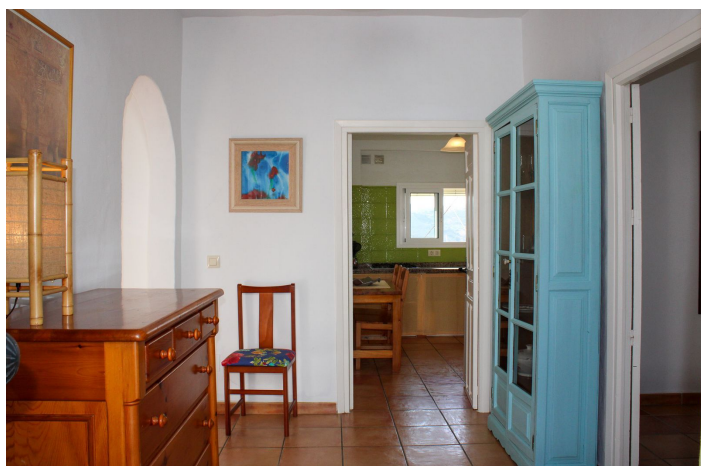
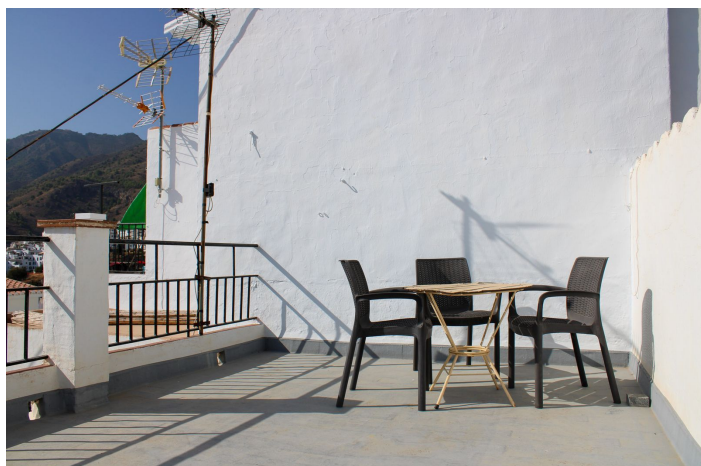




Townhouse for sale in Torrox

259,000 €

Reference: R4807900 Bedrooms: 1 Bathrooms: 1 Plot Size: 134m² Build Size: 101m²





Costa del Sol East, Frigiliana

Centrally Located Townhouse in Frigiliana With Fantastic Views and Possibilities.

Discover a spacious terraced house on three levels in the heart of charming Frigiliana, with a lovely roof terrace offering a magnificent view of the surrounding mountains. This property combines the best of modern convenience and traditional Andalusian charm. A unique opportunity for those looking for a home with potential, as there is also the possibility to build an additional floor.

The house has a private garden where you can create your own oasis, with space for vegetable gardens and fruit trees. The garden is accessed via the basement level, which is currently used as a laundry and storage room.

Inside, you are welcomed by a spacious hall that connects the different parts of the house. On the entrance floor, you will find a large bedroom to the right, while a spacious kitchen with dining area and a living room are straight ahead. From the hall, turn left and find a fresh bathroom with a bathtub, as well as a staircase up to the sunny roof terrace and down to the basement level.

The location is unbeatable with restaurants and a supermarket just around the corner. The idyllic beach of Nerja can be reached in less than 15 minutes by car, and Málaga airport is only 50 minutes away. Regular bus services connect Frigiliana with Nerja, and taxi fares are affordable. For the golf enthusiast, the renowned Baviera Golf Course is only 25 minutes away by car, and in winter you can reach the ski paradise of Sierra Nevada in Granada in just an hour and a half.

This townhouse offers a unique opportunity to enjoy the best of both worlds - proximity to both the glorious beaches of the coast and the majestic nature of the mountains. Don't miss the chance to make this gem your new home in southern Spain.



Features:

Features

Near Transport
Private Terrace
Storage Room
Solarium
Restaurant On Site
Basement

Setting

Close To Golf
Close To Shops
Close To Sea
Close To Town
Town
Close To Skiing

Kitchen

Fully Fitted

Category

Resale

Orientation

South
South West

Condition

Good

Garden

Private

Views

Mountain
Panoramic
Country

Furniture

Fully Furnished

Parking

Street