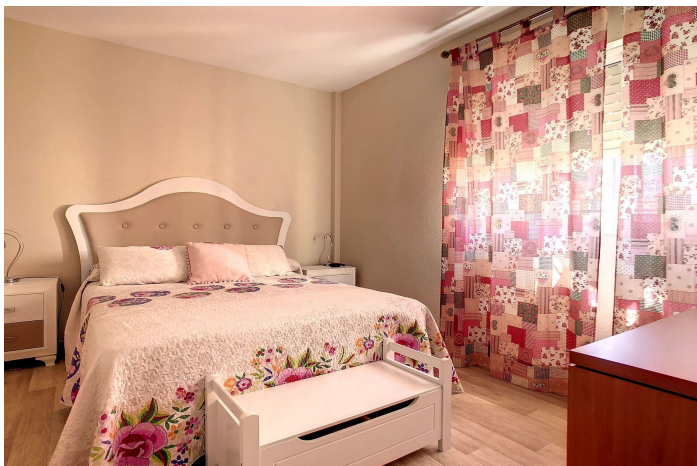


Villa détachée à vendre à Alhaurín de la Torre

750 000 €

Référence: R4364068 Chambres: 6 Bain: 5 Construite: 320m² Terrasse: 20m²



Malaga Inland, Alhaurín de la Torre

Detached house for sale in Alhaurin de la Torre, Malaga

Are you looking for a large house with many possibilities? This is your home!

Villa with 6 bedrooms with private pool, orchard where you can find: apples, oranges, loquats, melons, lemons, blackberries, plums, peppers, tomatoes, pears, pumpkins, aromatic plants.

The first floor has a ramp for children or people with reduced mobility. Independent entrance from the street and has 2 bedrooms, 1 kitchen, 1 dining room, 2 bathrooms and a large living room. This part of the house has a business license, since for 20 years it was a nursery and is adapted with special anti-fall / anti-slip floor for children.

Outside there is a small apartment with kitchen/dining room with fireplace, 1 bedroom and 1 bathroom. To which it can be given multiple uses.

In the garage for 3 cars at street level and with automatic door, we find a toilet and a space that could be used as a gym, workshop, etc...

The upper floor also with separate entrance has 3 very spacious bedrooms, and with access to a terrace, living - dining room with fireplace and air conditioning, separate kitchen glazed and with views, 1 bathroom with bathtub.

Its location is privileged to be in front of a public school which makes it even more attractive when starting a business. Ideal for large families, to enjoy with family and friends or to undertake a work project.

Just 7 minutes from Malaga-Costa del Sol International Airport and 8 minutes from Los Alamos Beach in Torremolinos.

Do not miss this unique opportunity.
Contact us for more information.

Spécification:

Caractéristiques

Terrasse couverte

Terrasse privée

Pièce de stockage

Double vitrage

Buanderie

Appartement

Accès aux personnes à mobilité réduite

Sous-sol

Vues

Montagne

Piscine

Rue

Piscine

Private

Jardin

Private

Services publics

Électricité

Eau potable

Orientation

Ouest

Sud

Est

Nord

Paramètre

Près des écoles

Près de la ville

Meubles

Optional

Sécurité

Téléphone d'entrée

Catégorie

Affligé

Contrôle du climat

Climatisation

Cheminée

Condition

Bien

Cuisine

Partiellement équipé

Parking

Souterrain

Garage

Private

Plus d'un

Covered