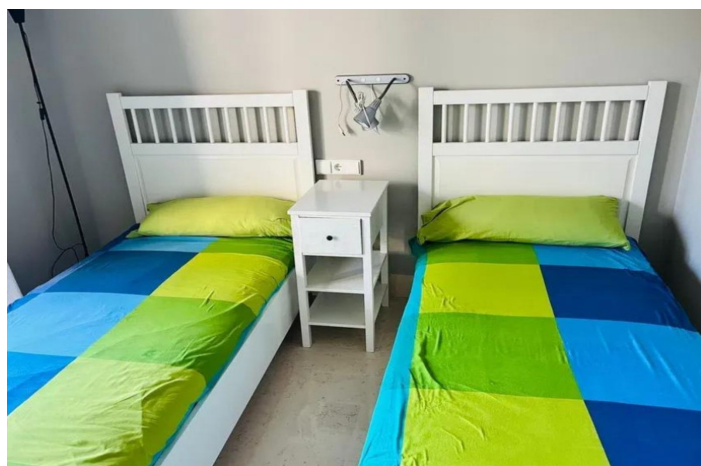




## Middenverdieping appartement te koop in Sotogrande

390.000 €

Referentie: R4943920 Slaapkamers: 2 Badkamers: 2 Perceelgrootte: 115m<sup>2</sup> Terras: 24m<sup>2</sup>





## Costa del Sol, Sotogrande Puerto

“A beautiful and bright 2-bedroom apartment in the heart of Puerto de Sotogrande.

Located in one of the best areas of Sotogrande , a few meters from the beach and the paddle club.

Situated on the 2nd floor of this beautiful building.

It has a built-up area, including its proportional share of common elements, of 108.20 m<sup>2</sup> of housing, and 23.94 m<sup>2</sup> of terrace, garage space, and storage room.

The apartment has a large living/dining room, making it the perfect place for your leisure time.

It has a separate kitchen, 2 double bedrooms and 2 bathrooms.” Floor Apartment, Sotogrande Puerto, Costa del Sol.

2 Bedrooms, 2 Bathrooms, Built 115 m<sup>2</sup>, Terrace 24 m<sup>2</sup>.

Setting : Beachfront, Commercial Area, Beachside, Port, Close To Golf, Close To Port, Close To Shops, Close To Sea, Close To Schools, Marina, Close To Marina, Urbanisation, Front Line Beach Complex.

Orientation : South.

Condition : Good.

Pool : Communal, Children`s Pool.

Climate Control : Air Conditioning, Hot A/C, Cold A/C.

Views : Sea.

Features : Covered Terrace, Lift, Fitted Wardrobes, Near Transport, Private Terrace, Satellite TV, WiFi, Storage Room, Utility Room, Ensuite Bathroom, Access for people with reduced mobility, Marble Flooring, Double Glazing, Fiber Optic.

Furniture : Fully Furnished.

Kitchen : Fully Fitted.

Security : Gated Complex, Electric Blinds, 24 Hour Security, Safe.

Parking : Underground, Garage, Covered, Private.

Category : Resale.



## Kenmerken:

### Kenmerken

Overdekt terras  
Tillen  
Nabij transport  
Privéterras  
Satelliet TV  
Opslagruimte  
Ensuite badkamer  
Marmeren vloeren  
Dubbel glas  
Op maat gemaakte kledingkasten  
Wifi  
Bijkeuken  
Glasvezel  
Toegang voor mensen met verminderde mobiliteit

### Keer bekeken

Zee

### Oriëntatie

zuiden

### Instelling

Winkel gebied  
Strand  
Dicht bij golf  
Dicht bij de poort  
Verstedelijking  
Dicht bij winkels  
Dicht bij scholen  
Dicht bij zee  
Dicht bij jachthaven  
Aan het strand  
Frontlinie strandcomplex  
Jachthaven

### Meubilair

Volledig ingericht

### Parkeergelegenheid

Ondergronds  
Garage  
Privaat  
Bedekt

### Klimaatcontrole

Airconditioning  
Koud A/C  
Hete a/c

### Voorwaarde

Goed

### Pool

Gemeenschappelijk  
Kinderen zwembad

### Beveiliging

Gated Complex  
24 -uurs beveiliging  
Elektrische jaloezieën  
Veilig

### Keuken

Geheel op maat gemaakt

### Categorie

Wederverkoop