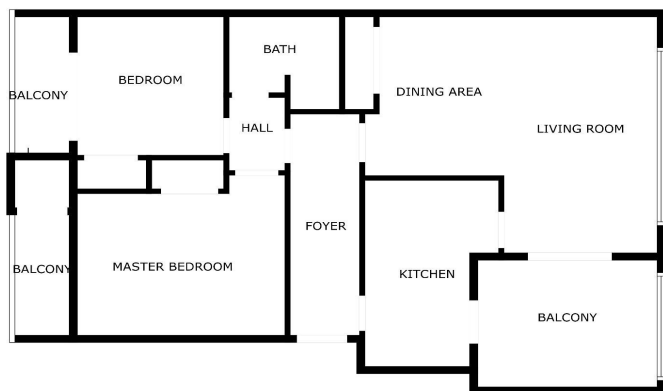




## Penthouse for sale in Fuengirola

479,000 €

Reference: R4776928 Bedrooms: 2 Bathrooms: 1 Build Size: 84m<sup>2</sup> Terrace: 7m<sup>2</sup>



SIZES ARE APPROXIMATE, ACTUAL MAY VARY.





---

## Costa del Sol, Fuengirola (town)

Discover this wonderful penthouse in an unbeatable location that will captivate you from the first moment. Perfect for those looking for comfort, functional design and spectacular views of the sea. Upon entering, you will be greeted by a spacious and bright living room with large windows that frame stunning views of the sea. The living room integrates perfectly with the kitchen, creating a cozy and practical space. From here, you access a beautiful terrace, ideal for enjoying your morning coffee or a sunset drink while admiring the tones of twilight. Facing south, this terrace receives sun almost all day, becoming a natural extension of the living room, where you can relax and enjoy the views. The penthouse has two bedrooms, a large bathroom with shower and a private sauna with its own shower room, located at the rear. The sauna offers impressive views of the mountain and the emblematic figure of "El Toro". Additionally, there is another terrace at the rear, facing west, perfect for watching the beautiful sunsets over the mountains. This penthouse is sold fully furnished, with large built-in wardrobes in both bedrooms. It includes a parking space and is part of an urbanization that offers a community pool, as well as community gardens. The location in the lower area of Torreblanca is ideal. It is close to the beach, shops, restaurants, daycare, public transportation, train station and has easy access to the highway. Despite being close to everything, the area is very quiet, which makes it a perfect place both to live and to invest. With an existing tourist license, this penthouse guarantees a constant rental throughout the year. Don't miss the opportunity to live in this beautiful penthouse and enjoy a relaxed life on the sunny coast. Contact us today for more information and to schedule a showing!



Features:

Features

Covered Terrace  
Lift  
Near Transport  
Private Terrace  
Double Glazing  
Fitted Wardrobes  
Sauna

Views

Sea  
Mountain

Pool

Communal

Garden

Communal

Orientation

South  
South East

Setting

Beachside  
Close To Port  
Close To Shops  
Close To Schools  
Close To Town

Furniture

Part Furnished

Parking

Underground  
Private

Climate Control

Air Conditioning

Condition

Good  
Excellent

Kitchen

Fully Fitted

Category

Investment