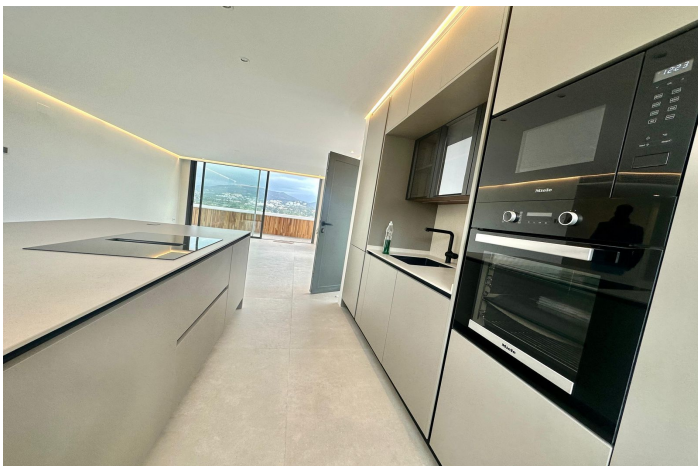




Penthouse zum Verkauf in Marbella

950.000 €

Referenz: R4974928 Schlafzimmer: 2 Badezimmer: 2 Garten: 100m² Terrasse: 13m²





Costa del Sol, Nueva Andalucía

Luxury Penthouse in Jardines de Nueva Andalucía:

Elegance, Comfort, and Panoramic Views Experience an exclusive lifestyle in this stunning fully renovated 2024 penthouse, nestled in the prestigious Jardines de Nueva Andalucía. Boasting a sleek modern design and high-end finishes, this 2-bedroom, 2-bathroom property offers 100 m² of sophistication and comfort, complemented by a spectacular 13 m² private terrace with breathtaking views of La Concha, the surrounding golf courses and sea views. The open-plan layout enhances natural light and spaciousness, creating a refined yet inviting ambience. Sunlight floods every corner, highlighting contemporary details, elegant ceramic flooring, and a thoughtfully designed interior for maximum comfort. Key Features: ✓ Fully renovated in 2024, featuring a modern style with top-quality materials. ✓ 13 m² private terrace, perfect for sunlit breakfasts or dining under the stars. ✓ Private lift access, ensuring maximum convenience and privacy. ✓ Communal pool and landscaped gardens, offering a peaceful retreat in Nueva Andalucía. ✓ Prime location, just minutes from fine dining, boutique shopping, and the glamorous Puerto Banús. An ideal home, whether for year-round living or a luxurious getaway in Marbella.

Don't miss out on this unique opportunity – contact us today for a viewing!



Eigenschaften:

Merkmale

Aufzug
Private Terrasse
Lagerraum
Privatem Badezimmer
Einbauschränke

Ansichten

Meer
Berg
Schwimmbad
Golf

Schwimmbad

Gemeinschaft

Garten

Gemeinschaft

Kategorie

Außerplanmäßig

Orientierung

Süd
Süd-Ost

Einstellung

Siedlung
In der Nähe von Geschäften

Möbel

Nicht eingerichtet

Parken

Garage

Klimakontrolle

Klimaanlage
A/C Vorinstallierte
Kalte a/c
Heiße A/C.
Zentralheizung
Zustand
Kürzlich renoviert

Küche

Voll Ausgerüstet
Versorgungsunternehmen
Elektrizität
Trinkwasser