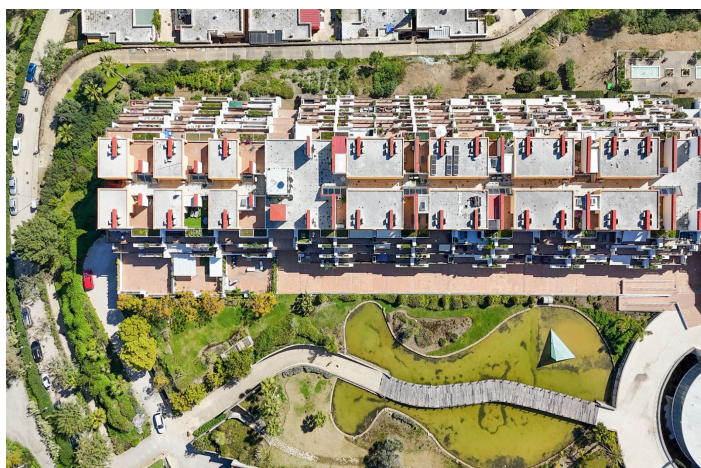




Duplex à vendre à Benahavís

290 000 €

Référence: R5004880 Chambres: 2 Bain: 1 Construite: 99m² Terrasse: 45m²





Costa del Sol, Benahavís (town)

You won't find anything like this! Duplex penthouse in the exclusive Parque Botanico Resort and Country Club, in Benahavis, a true oasis of tranquility surrounded by nature. This bright home features two bedrooms and one bathroom, designed to offer comfort and quality of life.

The living-dining room, with direct access to a spacious terrace, offers panoramic views of the majestic mountains, creating the perfect space to relax or share special moments. The independent kitchen is fully equipped. On the same floor, you'll find a cozy bedroom with built-in wardrobes and a modern bathroom.

The upper floor houses another spacious bedroom, with the possibility of transforming it into an independent studio thanks to the option of installing a kitchen and an additional bathroom. You will also enjoy another terrace with fabulous views that connect you to the beauty of the surroundings.

This penthouse is in perfect condition and includes solar panels for energy and hot water, air conditioning, a garage, and a storage room. With a tourist rental license, it is ideal as both a permanent residence or an investment.

The resort offers dreamlike facilities: gardens designed with lagoons and water features, indoor and outdoor community pools, spa, gym, tennis, squash and football courts, play area, and 24-hour security. All this just five minutes drive to the main road, strategically located between Marbella and Estepona.

A place where luxury and nature come together to offer you an extraordinary life. Come visit!

The abbreviated information document is available. Expenses: Taxes (ITP or VAT+AJD) + Notary and registry fees.
CN1



Spécification:

Caractéristiques

Ascenseur

Solarium

Condition

Bien

Cuisine

Entièrement équipée

Cote d'émission de CO2

C

Orientation

Est

Piscine

Communautaire

Sécurité

Système d'alarme

Contrôle du climat

Chauffage central

Meubles

Entièrement meublé

Cote d'énergie

C