

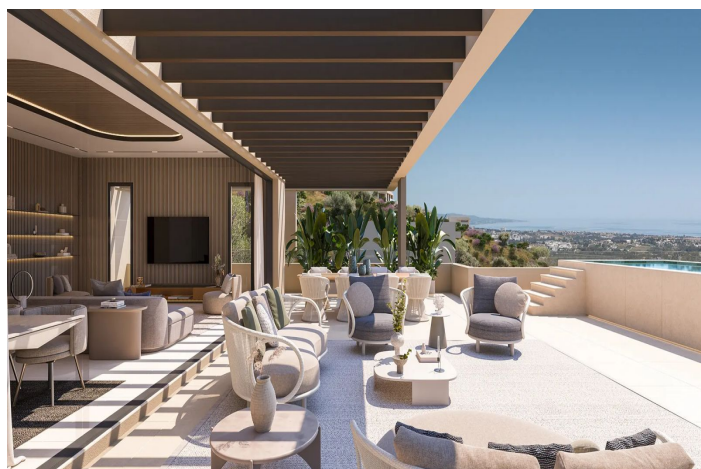


## Lejlighed i stueetagen til salg i Benahavís

2.400.000 -

2.900.000 €

Reference: R5015353   Soveværelser: 3 - 4   Badeværelser: 3 - 4   Byg Størrelse: 331m<sup>2</sup> - 337m<sup>2</sup>   Terrasse: 128m<sup>2</sup> - 166m<sup>2</sup>





## Costa del Sol, Benahavís (town)

Positioned in an idyllic setting near Marbella, these sky villas represent the newest chapter. This innovative development merges the spaciousness of a traditional villa with the convenience and security often found in high-end apartment residences. Each property has been carefully crafted to maximise privacy, providing sweeping sea views from expansive terraces and light-filled interiors. Whether you desire a serene sanctuary or a stylish venue for entertaining, the sky villas promise modern luxury in a truly privileged setting. **EXCLUSIVE DESIGN AND LAYOUTS** The sky villas at this project form part of six boutique buildings, each strategically oriented to capture the region's stunning vistas. Buildings 01 to 05 (Type 01) offer three individual sky villas apiece, while Building 06 (Type 02) contains two remarkable homes. Every residence spans one or two entire floors, affording a sense of space seldom found in conventional apartments. This architectural approach not only guarantees uninterrupted views but also allows private lift access straight to your home from your personal garage. **PREMIUM SPECIFICATIONS AND FINISHES** Every sky villa boasts high-quality materials and meticulous craftsmanship. While each home is already finished to exceptional standards, owners may select from a curated range of finishes to reflect their personal tastes. An optional pool on the terrace further enhances the sense of luxury. Additionally, each property is equipped with its own secure garage and private lift access, elevating both convenience and exclusivity.



## Funktioner:

### Funktioner

Dækket terrasse  
Løfte op  
Ensuite badeværelse  
Dobbeltvindue  
Monterede garderobereskabe  
Bryggers

### Indstilling

Tæt på golf  
Tæt på byen

### Køkken

Fuldt monteret

### Parkering

Garage  
Privat

### Klima kontrol

Kold aircondition  
Varm aircondition  
U/f/h badeværelser

### Tilstand

Ny konstruktion

### Have

Kommunal  
Anlæg

### Kategori

Ny udvikling

### Synspunkter

Hav  
bjerg  
Panoramisk  
Pool

### Pool

Kommunal

### Sikkerhed

Gated kompleks  
Indgangstelefon