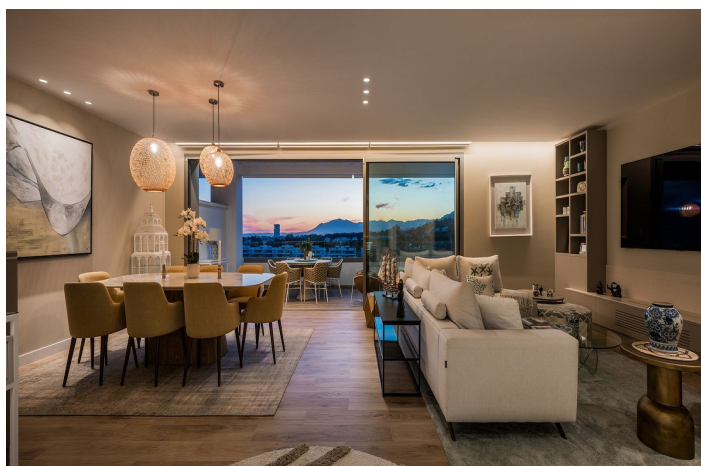
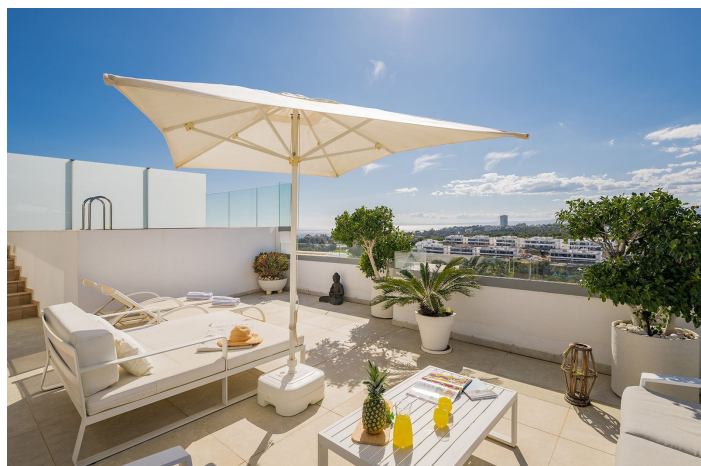
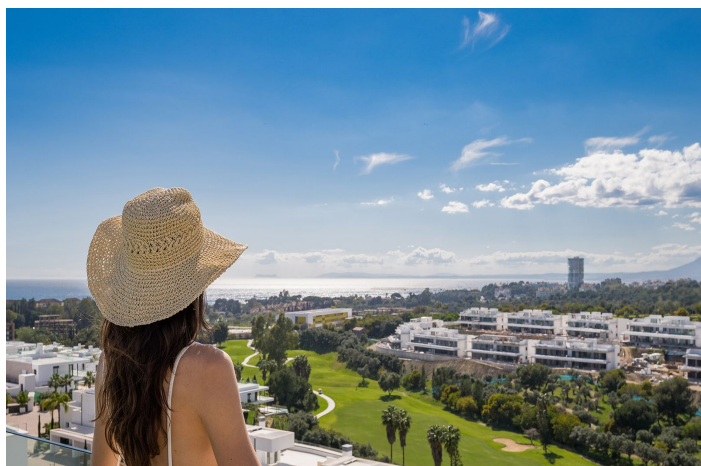




Penthouse for sale in Marbella

2,600,000 €

Reference: R4346290 Bedrooms: 4 Bathrooms: 4 Build Size: 213m² Terrace: 173m²





Costa del Sol, Marbella (town)

UNIQUE PENTHOUSE | SOUL SUNSET | SANTA CLARA GOLF | POOL | SEA, CITY & MOUNTAIN VIEWS The video must be seen! Welcome to your new home in Marbella - where comfort meets style in a stunning setting. This spacious 4-bedroom corner penthouse is all about relaxed luxury, tucked away in a beautiful green area surrounded by top golf courses and elegant homes. Located in the sought-after Soul Marbella community, you'll also enjoy access to 5-star hotel-style services that make everyday living feel like a holiday. Set over two levels, the 213 m² interior offers a bright and welcoming living space with a modern electric fireplace, a generous dining area, and a sleek, fully fitted kitchen with NEFF appliances. The southwest-facing bedrooms are filled with natural light, and the stylish bathrooms have been thoughtfully designed for both comfort and convenience. One of the best parts of this home is the outdoor space - and there's plenty of it. With 173 m² of sunny terraces, including a huge rooftop solarium, you'll have everything you need to soak up the Mediterranean lifestyle. Lounge by your private pool, unwind in the chill-out zones, or host family and friends in the outdoor kitchen with a built-in BBQ and dining area - all with fantastic sea and golf views. We focus on quality homes near Marbella's best beaches and golf courses, and with over 30 years of experience in construction and real estate, we're here to help you find the right property. If you'd like more details on this stunning home - including floor plans, specs, or amenities i Soul Marbella just reach out. We're always available and happy to help!



Features:

Features

Covered Terrace
Lift
Private Terrace
Storage Room
Ensuite Bathroom
Double Glazing
24 Hour Reception
Fitted Wardrobes
Utility Room
Barbeque
Gym
Domotics
Solarium
Sauna

Views

Sea
Mountain
Panoramic
Garden
Pool
Golf

Pool

Communal
Indoor
Private
Children`s Pool

Garden

Communal
Landscaped

Category

Luxury
Contemporary
Golf

Orientation

West
South
South West

Setting

Close To Golf
Urbanisation
Close To Schools

Furniture

Optional

Security

Gated Complex
24 Hour Security
Alarm System
Electric Blinds
Entry Phone

Climate Control

Air Conditioning
Cold A/C
Hot A/C
Fireplace
U/F/H Bathrooms
U/F Heating

Condition

Excellent

Kitchen

Fully Fitted

Parking

Underground
Garage
More Than One