

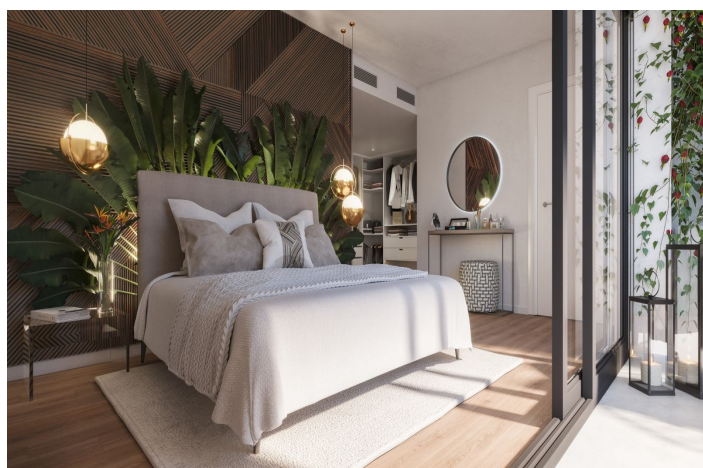


## Radhus till salu i Mijas

949 000 - 1 465 000

€

Referens: R4449847   Sovrum: 3 - 4   Badrum: 2   Komplot: 29m<sup>2</sup> - 160m<sup>2</sup>   Bygga: 142m<sup>2</sup> - 165m<sup>2</sup>   Terrass: 35m<sup>2</sup> - 66m<sup>2</sup>





---

## Costa del Sol, Mijas Costa

SOLEIA LIVING CHAPARRAL GOLF, a paradise in the heart of the Costa del Sol, where the natural beauty of the surroundings merges with the passion for golf, water sports and the “Slow Living” lifestyle. SOLEIA is a project of 69 luxury villas of 3 and 4 bedrooms, starting with a 1st phase of 23 villas and 2nd phase of 46 villas, with the best orientation, South/ South West, and spectacular sea and golf views. Only 2 minutes walk to the clubhouse of the 18 hole El Chaparral golf course and walking distance to the beach! Large outdoor spaces with extensive terraces and garden and spacious and bright interior spaces. A private swimming pool in the garden and an indoor lift in the property are some of the optional extras on offer. The communal areas include large swimming pools with sea and golf course views, barbecue area, coworking space, fully equipped gym and Spa with sauna and Turkish bath. The SoleiApp is a tool that the owners will have to stay connected and make their life easier, it is like a digital concierge. A privileged location and very well communicated right in the middle between Malaga and Marbella, only 20 minutes drive from Malaga airport and the access road to the development links directly to the coast road CN340 at km 203,5 Already under construction. PHASE 1 SOLD OUT The estimated delivery date of phase 2 is Q3 2027. 3 bedroom villas from 957.000 € and 4 bedroom villas from 1.011.000 € Fully fitted and equipped Italian design kitchen, 2 parking & storage room. Communal areas: 2 swimming pools, turkish bath, sauna, fully equipped gym, coworking area, barbecue area & much more. Built area. From 204.74 to 337.99 m<sup>2</sup> Bedrooms. 3-4 Terraces. From 35.08 to 107.17 m<sup>2</sup> Private garden. From 29.8 to 317.21 m<sup>2</sup>



## Funktioner:

### Funktioner

Privat terrass  
Förvarings rum  
Grilla  
Gym  
Bastu  
**Kök**  
Fullmonterad

### Orientering

söder

### Slå samman

Gemensam  
Privat

### Parkering

Mer än en

### Kategori

Ny utveckling