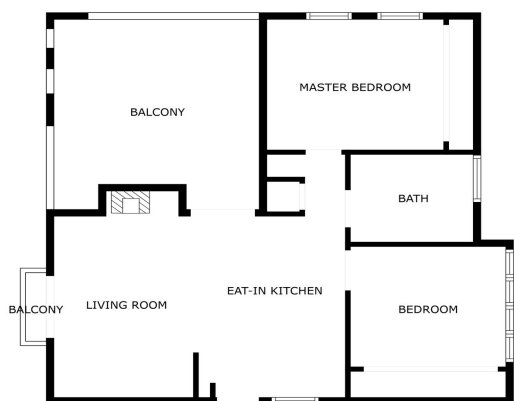




## Penthouse zum Verkauf in Benalmádena

443.000 €

Referenz: R5032642 Schlafzimmer: 2 Badezimmer: 1 Grundstücksgröße: 79m<sup>2</sup> Garten: 79m<sup>2</sup>



SIZES ARE APPROXIMATE, ACTUAL MAY VARY.





## Costa del Sol, Benalmadena Costa

Rare Opportunity – A Unique Home in a Legendary Community at a Prime Location! This stunning, fully renovated two-bedroom corner apartment offers the perfect combination of top location, high-quality finishes, and exceptional comfort. Ideally situated in the best part of the sought-after Pueblo Evita complex – penthouse, in a peaceful corner position right on Avenida Las Palmeras – and just a few minutes' walk from the beach and all amenities. The undisputed highlight of the home is the large, private terrace, recently fitted with a state-of-the-art Lumon Panel Sandwich roofing system. It keeps out all rain while still allowing full sunlight in when desired – the panels slide away completely. The terrace also features a fireplace, connected to the chimney of the cozy indoor fireplace in the living area. The apartment has been renovated throughout with Nordic-quality craftsmanship, including: Stylish, fully renovated open-plan kitchen All appliances newly installed Cozy living room with fireplace Modern, functional bathroom Roof fully replaced by the current owner Interior and exterior freshly painted High-security front door installed The property is sold fully furnished, including high-quality furniture and recently purchased Unikulma beds – just bring your suitcase and move right in. The community features beautiful swimming pools, its own restaurants, and excellent accessibility. A private garage space is also included – a rare and valuable feature in this area! This is the perfect home for those who value quality, comfort, and a premium location.



## Eigenschaften:

### Merkmale

In der Nähe des Transports

Private Terrasse

Doppelverglasung

Einbauschränke

Grill

Bar

Restaurant vor Ort

### Einstellung

Strand

In der Nähe von Golf

In der Nähe des Hafens

In der Nähe von Geschäften

In der Nähe von Schulen

In der Nähe der Stadt

### Klimakontrolle

Klimaanlage

Kamin

### Schwimmbad

Gemeinschaft

Privat

### Ansichten

Berg

Urban

### Möbel

Voll möbliert