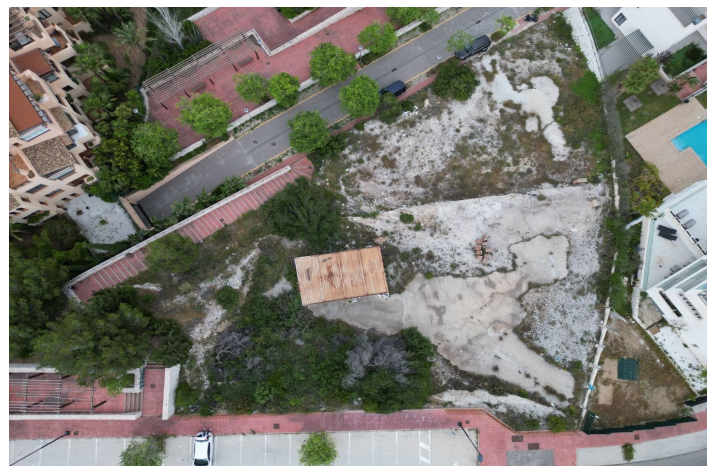




## Land zum Verkauf in Benalmádena

895.000 €

Referenz: R5034475 Grundstücksgröße: 1.997m<sup>2</sup>





---

## Costa del Sol, Benalmádena (town)

Presenting a rare opportunity to invest in a prime piece of land in the heart of Benalmádena, offering 1,997m<sup>2</sup> of southeast-facing terrain with uninterrupted views of the Mediterranean Sea. Perfectly positioned for commercial development, this plot is ideal for a range of business ventures, with permissions allowing for up to two levels of construction. Whether you're envisioning a boutique complex, office space, or an upscale commercial center, this site offers the ideal canvas. Enjoy unparalleled connectivity, with easy access to the motorway and just minutes from an array of local amenities including shops, restaurants, golf courses, and top-rated schools. Its elevated position not only delivers sweeping sea vistas but also ensures excellent visibility and accessibility—key for any successful commercial venture. This is more than just a land purchase—it's a strategic investment in one of the Costa del Sol's most sought-after locations.



## Eigenschaften:

### Merkmale

In der Nähe des Transports

### Ansichten

Meer

Berg

Panorama

Land