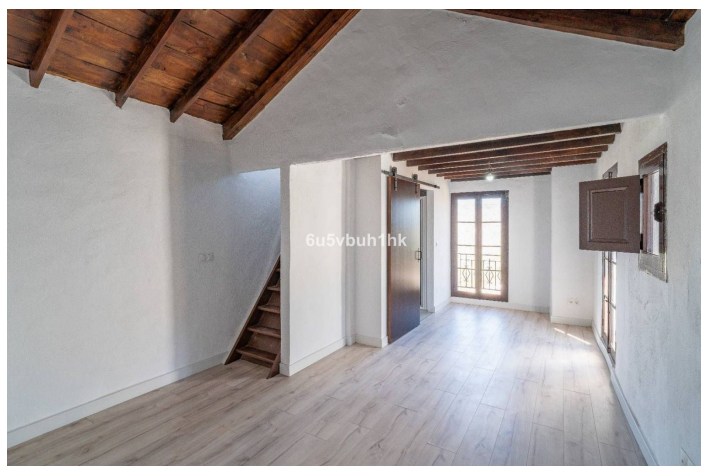
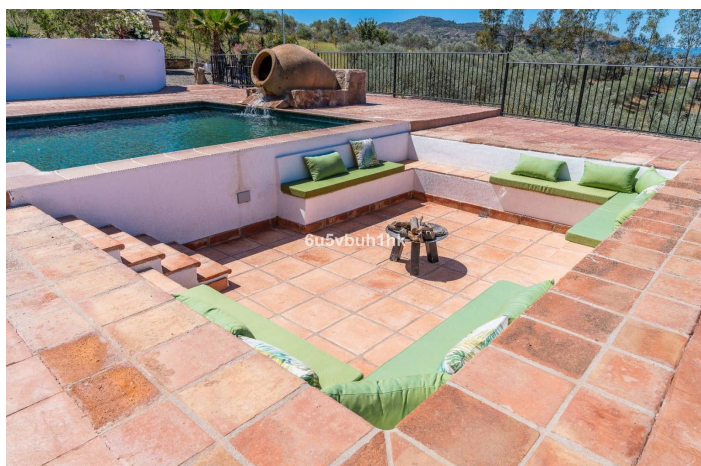




## Finca - Cortijo zum Verkauf in Alora

1.150.000 €

Referenz: R5062984 Schlafzimmer: 10 Badezimmer: 8 Grundstücksgröße: 113.000m<sup>2</sup> Garten: 435m<sup>2</sup>







---

## Malaga Inland, Alora

Take advantage of the opportunity to acquire this impressive property, which covers more than eleven hectares of land and has a beautiful manor villa of more than 400 m<sup>2</sup> constructed area. The cortijo, with its white walls and wooden beamed ceilings, follows the Andalusian architectural style and is decorated in a rustic manner in harmony with the surroundings. Located in Álora, in a high mountain area, this property benefits from exceptional luminosity and offers wonderful panoramic views over the valley. The villa is distributed over two floors and also has a tower that houses a room with unbeatable views. On the ground floor, you will find a spacious living room with two rooms and a fireplace, a kitchen, a toilet and two bedrooms. The upper floor offers seven bedrooms, each with en suite bathroom, and an additional room in the tower. In the rear outdoor area, the patio with swimming pool offers incomparable views over the valley and is a spacious relaxation area, which includes a separate barbecue area. In addition, it is important to mention the charming little square with fountain that welcomes on the main façade. This finca has the potential to develop a tourist project, such as a camping or glamping, converting the house into a rural hotel. Its location just a few minutes from the centre of Álora and about fifteen minutes drive from the Caminito del Rey, an international tourist attraction in the Guadalhorce Valley region, makes it a unique investment for those looking to enjoy the beauty and uniqueness of this World Heritage route. Distances: 5 km to the centre of Álora (all services and shops). 4 km to Alora train station 40 km to the train station of Malaga María Zambrano 40 km to Malaga airport 20 km to El Chorro



## Eigenschaften:

### Merkmale

Überdachte Terrasse  
In der Nähe des Transports  
Private Terrasse  
Lagerraum  
Personalunterkunft

### Ansichten

Berg  
Panorama  
Land  
Garten  
Schwimmbad

### Schwimmbad

Privat

### Garten

Privat  
Angelegt

### Kategorie

Ferienwohnungen  
Investition  
Wiederverkauf

### Orientierung

West  
Süd  
Südwesten

### Einstellung

In der Nähe von Geschäften  
In der Nähe von Schulen  
In der Nähe der Stadt  
Land

### Möbel

Nicht eingerichtet

### Parken

Privat

### Klimakontrolle

Klimaanlage  
Kamin

### Zustand

Exzellent

### Küche

Nicht angepasst

### Versorgungsunternehmen

Elektrizität  
Telefon