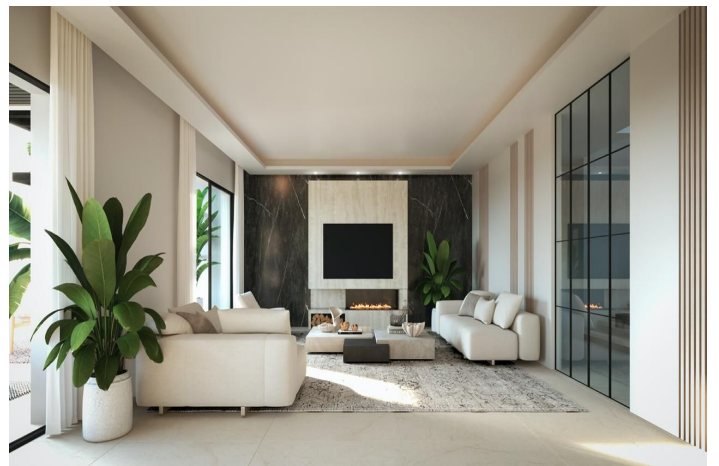




Villa for sale in Benalmádena

2,450,000 €

Reference: R5071420 Bedrooms: 6 Bathrooms: 6 Plot Size: 1,441m² Build Size: 725m² Terrace: 116m²





Costa del Sol, Benalmádena (town)

A unique opportunity to acquire a 1,441 m² plot located in the privileged area. This plot comes with a construction project and approved building license. **LAYOUT AND DESIGN** The villa is connected by a private elevator from the basement to the rooftop solarium. Every space has been thoughtfully designed to provide spaciousness, functionality, and natural light. A villa on a 1,441 m² plot, distributed as follows: Garden Level: 314 m² Ground Floor: 168 m² First Floor: 158 m² Solarium: 116 m² **FEATURES AND FINISHES** Interior elevator connecting all levels Aerothermal climate control system, underfloor heating, and individually zoned air conditioning State-of-the-art thermal and acoustic insulation Fully customizable finishes: materials, carpentry, flooring, and more. Fully furnished and equipped kitchen Optional pre-installation of smart home automation and security systems **LOCATION AND AMENITIES** The property is in a residential area offering stunning sea views, peace and quiet, and close proximity to essential services: Just 6 minutes from the beach 15 minutes from Málaga International Airport Close to shopping areas, schools, medical centers, and sports facilities Near golf courses, Puerto Marina, supermarkets, and fine dining restaurants **PERFECT FOR LIVING OR INVESTMENT** This villa is ideal for building your dream home or as a high-yield investment, thanks to its strategic location, modern design, and customization potential. This is the perfect opportunity to live in a villa tailored to your lifestyle!



Features:

Features

Covered Terrace
Lift
Near Transport
Private Terrace
Ensuite Bathroom
Jacuzzi
Barbeque
Domotics
Solarium
Basement

Views

Sea
Mountain
Panoramic
Garden
Pool
Courtyard

Pool

Private

Garden

Private
Landscaped

Category

Investment
With Planning Permission
New Development
Off Plan

Orientation

South East

Setting

Close To Golf
Close To Shops
Close To Schools
Close To Sea

Furniture

Fully Furnished

Security

Safe

Climate Control

Cold A/C
Hot A/C
U/F Heating

Condition

New Construction

Kitchen

Fully Fitted

Parking

More Than One