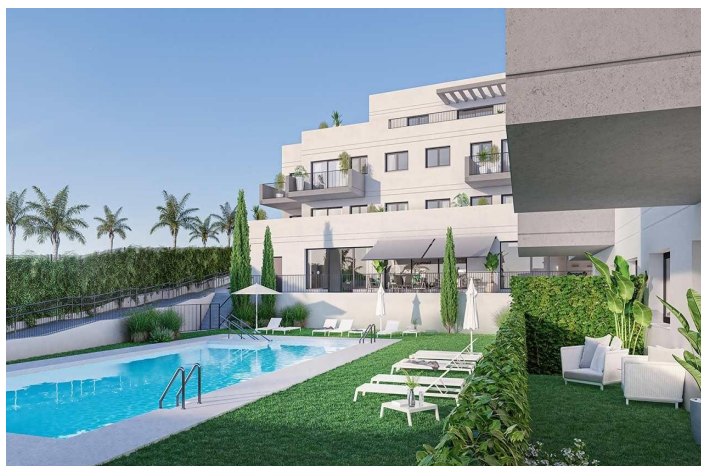




Ground Floor Apartment for sale in Velez-Málaga

318,100 €

Reference: SP0562 Bedrooms: 2 Bathrooms: 2 Plot Size: 21m² Build Size: 75m² Terrace: 11m²





Costa del Sol East, Vélez-Málaga (town)

NEW BUILD RESIDENTIAL COMPLEX IN VELEZ-MALAGA New Build unique residential complex in Velez-Malaga that offers all the functionalities and creating an ideal place to live. The development consists of 154 flats of 2 and 3 bedrooms, all of them with parking space and storage room. The communal areas are undoubtedly a wealth of great advantages that will make your life much easier and more pleasant. A unique place that you can enjoy with whoever you want. Complex has the exclusivity of a swimming pool surrounded by green areas, gym and social-gourmet room. We have taken care of every detail to turn this development into your future home. Therefore, we offer you homes that stand out for their excellent design and luminosity. Vélez-Málaga is the perfect combination between the culture of the towns in the interior of the Axarquía and the dynamism of the coastal enclaves of the province of Málaga. Its rich monumental heritage and its 25 kilometers of coastline make this municipality an ideal destination throughout the year. Walking through the old town of Vélez-Málaga, declared a Historic-Artistic Site, is to immerse yourself in history. A past from which impressive architectural jewels and deep-rooted traditions are preserved today. And to relax, nothing better than enjoying the Mediterranean Sea that bathes this municipality on the Western Costa del Sol. In the tourist centre of Torre del Mar, its beaches and its magnificent promenade await us. In Caleta de Vélez, its golf course and its sports and fishing port.



Features:

Features

Location: Coastal, Urbanisation

Parking - Space

Near schools

Communal Pool

Near Commercial Center

Near Golf / Golf Resort Property

Number of Parking Spaces: 1

Gated

Furnished

Useable Build Space: 62 Msq.

Double Bedrooms: 2

Air Conditioning: Yes, Pre-Installed
garden

Beach: 1500 Meters

Elevator/Lift

Terrace: 11 Msq.

Energy Rating

B

CO2 Emission Rating

B