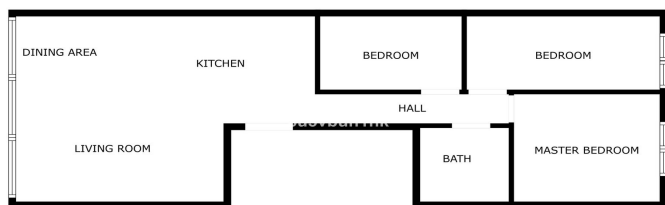




## Lejlighed i stueetagen til salg i Málaga

319.000 €

Reference: R4853428    Sovværelser: 5    Badeværelser: 2    Plot Size: 65m<sup>2</sup>    Byg Størrelse: 122m<sup>2</sup>



SIZES ARE APPROXIMATE, ACTUAL MAY VARY.





## Costa del Sol, Málaga (town)

Enjoy this. Living in Campanillas offers you the perfect balance between tranquility and accessibility. If you're looking for a peaceful residential area without sacrificing proximity to dynamic urban hubs, this is an ideal choice. Thanks to its excellent road connections, including the Guadalhorce Highway (A-357), you can reach Málaga city center in just 20 minutes. Plus, with Alhaurín de la Torre and Cártama both less than a 15-minute drive away, you'll always stay well-connected while enjoying the serenity of home. Campanillas provides everything you need for a comfortable lifestyle, from supermarkets to educational centers like the Campanillas Institute. While local entertainment options may be limited, you'll have easy access to Teatinos, where you can enjoy restaurants, cafés, and recreational activities. The area's unique blend of rural and urban elements ensures a relaxed yet well-connected living experience. In the Santa Rosalía neighborhood, two apartments are available for sale together, offering a unique opportunity tailored to different needs. Both units are designed to maximize space and provide an efficient, comfortable layout. If you're a small family or a young couple... The first-floor apartment, 65 m<sup>2</sup>, is a perfect fit. The open and functional living-dining room features panoramic mountain views, creating a bright and inviting atmosphere. The independent kitchen is well-placed for easy access and efficient use. With two cozy bedrooms and a well-positioned bathroom, this home offers everything you need for a comfortable and intimate living space. You'll love the peaceful environment and the beautiful views that make everyday life more enjoyable. If you're an investor... This is a fantastic opportunity for you. With two separate units in the same building, you can maximize your return on investment by renting out both apartments. They are well-furnished, move-in ready, and highly attractive to potential tenants, ensuring a steady income stream with minimal effort. If you work remotely or are a professional... You'll appreciate the second-floor apartment's design, which enhances natural light and provides a spacious, airy feel. Built over a private-use terrace, this unit features an open-plan kitchen and living room, perfect for a comfortable and inspiring workspace. With three well-distributed bedrooms offering privacy, plus a bathroom equipped with a washer and dryer, you'll have everything you need to maintain a balanced work-life routine in a tranquil setting with stunning views of Alhaurín de la Torre and Cártama. This unit does not yet have a DAFO certificate—feel free to reach out for more details on this. If you have a large or multigenerational family... This setup is perfect for you. Having two separate apartments in the same building allows you to live close to loved ones while still maintaining personal space and independence. Whether you want to keep family members nearby or provide a separate living area for parents or adult children, this property offers the flexibility you need. Both apartments are thoughtfully furnished and decorated to provide you with a warm and welcoming atmosphere, ensuring a modern and comfortable lifestyle. You'll also benefit from a large storage room, ideal for keeping everything organized, and an underground parking space for convenience. This is your chance to secure a well-maintained, move-in-ready home in a peaceful yet connected neighborhood. Whether you're looking for your dream home, an investment opportunity, or a flexible space for your family, this property has something for you. Let's talk—this could be the perfect fit for you.



## Funktioner:

### Funktioner

I nærheden af transport

Opbevaringsrum

Dobbeltvindue

### Møbel

Fuldt møbleret

### Synspunkter

bjerg

Panoramisk

Land

### Indstilling

Tæt på skoler