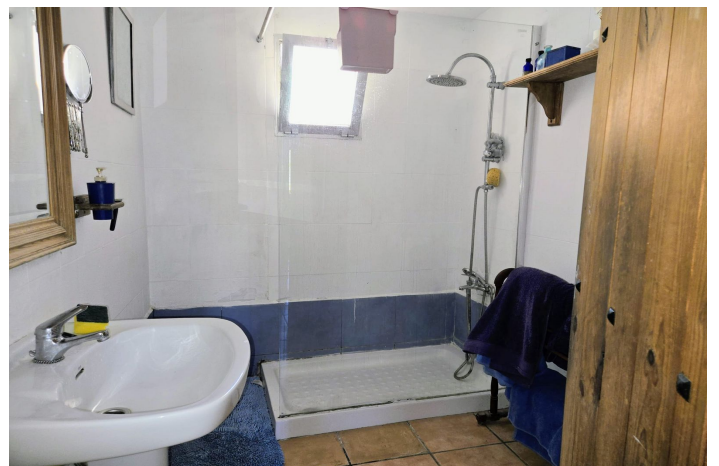




Semi-Detached House for sale in Almogía

200,000 €

Reference: R5143039 Bedrooms: 3 Bathrooms: 1 Plot Size: 4,100m² Build Size: 145m²





Malaga Inland, Almogía

Tucked away in the countryside just outside Almogía, this charming end-of-terrace home (one of only three in the row) is made for quiet, rural living. The ground floor centres on a good-sized living/dining room with a cosy log burner. Double doors open to a fabulous outdoor kitchen-dining area—complete with BBQ, pizza oven and space for long, lazy meals around a large table. You'll also find three bedrooms, a shower room with walk-in shower, and a generous country kitchen with freestanding dressers and units. Accessed via external stairs, the upper level offers two versatile rooms. Currently used as storage and an artist's studio, they would work equally well as a home office, reading room or additional bedroom. Outside, approximately 4,100 m² of rustic land is planted with a variety of fruit and olive trees and includes a functioning well. The property has mains water and electricity, yet with the land, trees and well, it's ideal for anyone keen to live more "off-grid"—growing produce and potentially adding renewable energy sources. Although Almogía's town centre is only about a 10-minute drive, the setting is very remote and wonderfully peaceful—perfect if you crave space and seclusion.

Key features End-of-terrace home (row of three) in rural Almogía Living/dining room with log burner Double doors to outdoor kitchen-dining with BBQ & pizza oven 3 ground-floor bedrooms; shower room with walk-in shower Good-sized country kitchen with freestanding units Two flexible upstairs rooms (via external stairs): studio/office/guest room ~4,100 m² rustic land with fruit & olive trees Functioning well; mains water & electricity Remote setting; ~10 minutes' drive to Almogía Excellent off-grid/self-sufficiency potential



Features:

Features

Barbeque

Views

Mountain

Country

Pool

Room for Pool

Garden

Private

Category

Investment

Resale

Orientation

South

Setting

Country

Furniture

Optional

Parking

Open

More Than One

Climate Control

Fireplace

Condition

Restoration Required

Kitchen

Partially Fitted

Utilities

Electricity

Drinkable Water