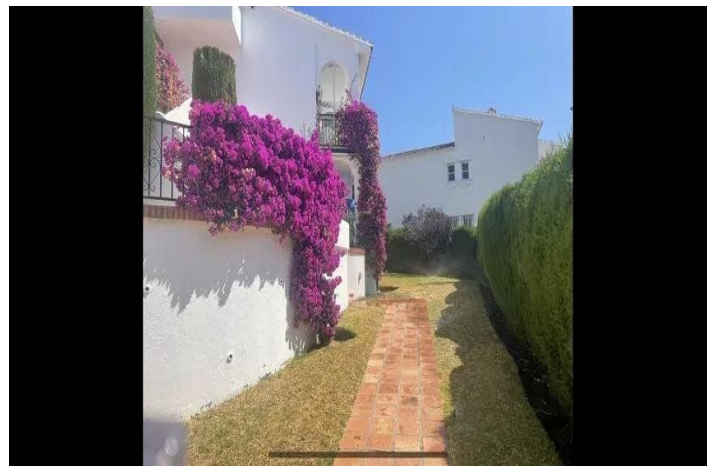




Appartement op de begane grond te koop in Benahavís

344.900 €

Referentie: R5153257 Slaapkamers: 2 Badkamers: 2 Plotgrootte: 85m² Perceelgrootte: 85m² Terras: 56m²





Costa del Sol, Benahavís (town)

♂ Experience Golf, Sun, and Exclusivity in the Marbella – Benahavís Golf Valley ✱ In the heart of the prestigious El Paraíso Golf Valley lies this modern 90 m² apartment, designed for those who value the Mediterranean lifestyle and proximity to the best golf courses on the Costa del Sol. 📌 Highlights: • Bright living room with direct access to a spacious, all-day sunny terrace. • Unbeatable views: the green of the 18-hole golf course, the blue of the Mediterranean Sea, and the charm of Andalusian nature. • 2 spacious bedrooms, equipped with high-quality beds and built-in wardrobes. • 2 modern bathrooms and a fully equipped kitchen with recent appliances. • Patio with a washing machine and practical details for your convenience. • Elegant marble flooring and a small private garden with jasmine, perfect for relaxing after a round of golf. 📌 Lifestyle & Location: • Just a 3-minute walk to the golf course: you can go from breakfast to your first hole in a matter of minutes. • Large communal pool in a dreamy, white Andalusian setting. • Less than a 10-minute drive from Costalita beach, Puerto Banús, and all amenities. • Quiet, safe, and charming area, right on the New Golden Mile. 📌 With details that make a difference, such as a 55-inch Smart TV, electric blinds, and a parking space in front of the house, this apartment is perfect both as a luxury residence and as a holiday rental investment. The abbreviated information document is available to you. Expenses: Taxes (ITP or VAT+AJD) + Notarial and registration expenses- DGC.



Kenmerken:

Kenmerken

Overdekt terras
Marmeren vloeren
Barbecu

Voorwaarde

Goed

Keuken

Geheel op maat gemaakt

Oriëntatie

zuiden

Pool

Gemeenschappelijk
Energiebeoordeling
F

Klimaatcontrole

Centrale verwarming

Meubilair

Volledig ingericht
CO2 -emissierating
E