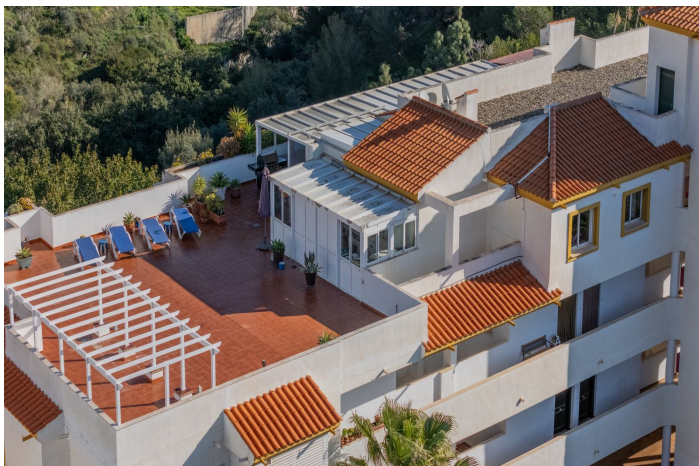




## Penthouse til salg i Benalmádena

695.000 €

Reference: R4955506   Soveværelser: 3   Badeværelser: 2   Byg Størrelse: 126m<sup>2</sup>   Terrasse: 182m<sup>2</sup>







## Costa del Sol, Benalmádena (town)

Stunning penthouse with exceptional terraces and panoramic views of the Mediterranean Sea and the beautiful Andalusian mountains near Benalmádena Pueblo. This penthouse offers a rare combination of spaciousness, privacy, and breathtaking views. With 126 m<sup>2</sup> of indoor living space, including a large, bright aluminium conservatory with double-glazed thermal windows and A/C (24 m<sup>2</sup> in total), there are two exits: one leading to a 6 m<sup>2</sup> morning terrace and another to a covered west-facing terrace of 23 m<sup>2</sup>. In addition, there is a massive south/west-facing terrace area of 154 m<sup>2</sup> with 360-degree sun views. This home is designed for enjoying life both indoors—featuring A/C in every room—and especially outdoors. There are endless opportunities for relaxation, sunbathing, and al fresco dining with spectacular views. The property offers three generous bedrooms, two modern bathrooms, a new Designa kitchen, and a spacious living room with direct access to the enclosed glass conservatory. Adjacent to the terrace, you will find a 12 m<sup>2</sup> utility room with a brand-new washer/dryer and a workshop with plenty of cabinets and counter space. The property comes with two private underground parking spaces and one storage room—all conveniently located next to the elevator, which takes you directly to the apartment. Located in a well-maintained urbanisation with two communal pools and a padel court, it's just a short walk to the charming Benalmádena Pueblo, where you'll find cosy cafés, restaurants, and shops. This is a unique opportunity to own a penthouse with outstanding outdoor space—perfect for those who wish to enjoy a comfortable lifestyle alongside the very best of the Costa del Sol's climate and way of life. Contact us today for more information or to arrange a viewing.



## Funktioner:

### Funktioner

Løfte op  
Privat terrasse  
Opbevaringsrum  
Ensuite badeværelse  
Solarium  
Padle tennis

### Indstilling

Urbanisering  
Tæt på skoler

### Møbel

Ikke møbleret

### Parkering

Underjordisk

### Klima kontrol

Aircondition

### Tilstand

Fremragende

### Have

Kommunal

### Kategori

Videresalg

Moderne

### Synspunkter

Hav  
bjerg  
Panoramisk

### Pool

Kommunal

### Sikkerhed

Gated kompleks