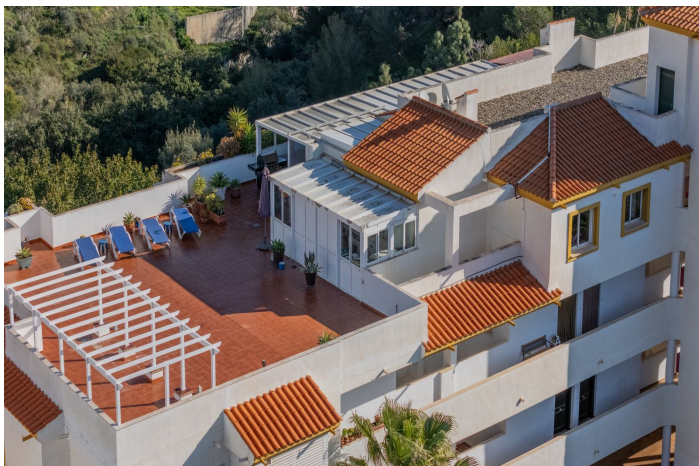




Penthouse à vendre à Benalmádena

695 000 €

Référence: R4955506 Chambres: 3 Bain: 2 Construite: 126m² Terrasse: 182m²





Costa del Sol, Benalmádena (town)

Stunning penthouse with exceptional terraces and panoramic views of the Mediterranean Sea and the beautiful Andalusian mountains near Benalmádena Pueblo. This penthouse offers a rare combination of spaciousness, privacy, and breathtaking views. With 126 m² of indoor living space, including a large, bright aluminium conservatory with double-glazed thermal windows and A/C (24 m² in total), there are two exits: one leading to a 6 m² morning terrace and another to a covered west-facing terrace of 23 m². In addition, there is a massive south/west-facing terrace area of 154 m² with 360-degree sun views. This home is designed for enjoying life both indoors—featuring A/C in every room—and especially outdoors. There are endless opportunities for relaxation, sunbathing, and al fresco dining with spectacular views. The property offers three generous bedrooms, two modern bathrooms, a new Designa kitchen, and a spacious living room with direct access to the enclosed glass conservatory. Adjacent to the terrace, you will find a 12 m² utility room with a brand-new washer/dryer and a workshop with plenty of cabinets and counter space. The property comes with two private underground parking spaces and one storage room—all conveniently located next to the elevator, which takes you directly to the apartment. Located in a well-maintained urbanisation with two communal pools and a padel court, it's just a short walk to the charming Benalmádena Pueblo, where you'll find cosy cafés, restaurants, and shops. This is a unique opportunity to own a penthouse with outstanding outdoor space—perfect for those who wish to enjoy a comfortable lifestyle alongside the very best of the Costa del Sol's climate and way of life. Contact us today for more information or to arrange a viewing.



Spécification:

Caractéristiques

- Ascenseur
- Terrasse privée
- Pièce de stockage
- Salle de bain
- Solarium
- Paddle tennis

Paramètre

- Urbanisation
- Près des écoles

Meubles

- Non meublé

Parking

- Souterrain

Contrôle du climat

- Climatisation

Condition

- Excellent

Jardin

- Communautaire

Catégorie

- Revente
- Contemporain

Vues

- Mer
- Montagne
- Panoramique

Piscine

- Communautaire

Sécurité

- Complexe fermé