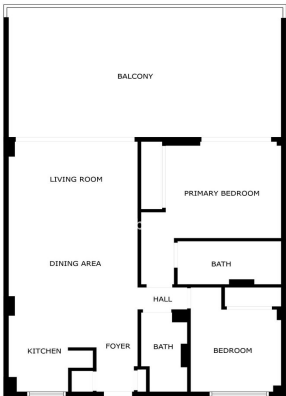




Appartement au rez-de-chaussée à vendre à Fuengirola

449 000 €

Référence: R5105299 Chambres: 2 Bain: 2 Construite: 79m² Terrasse: 39m²



SIZES ARE APPROXIMATE, ACTUAL MAY VARY.





Costa del Sol, Fuengirola

Beautiful, brand-new 2-bedroom apartment located in a just-completed residential complex in the sought-after El Higuero area, perfectly positioned between Fuengirola and Benalmádena. This new community allows short term rentals and this apartment already has a licence. This light-filled home offers two spacious bedrooms, including a master suite with an ensuite bathroom and direct access to a large terrace facing south and west, with spectacular sea views. The apartment also features a second, separate full bathroom for guests or family use. The open-plan kitchen is fully equipped and includes a central island, seamlessly connecting to the dining area and a generous living room. The layout is exceptionally functional, designed to make the most of space and natural light. Both the living room and master bedroom are equipped with floor-to-ceiling sliding glass doors that open up to the terrace, creating a smooth indoor-outdoor living experience. In addition to the beautifully designed interiors, the apartment includes two private parking spaces in the underground garage and a spacious private storage room. Residents also enjoy access to the communal swimming pool in the complex. The location is one of the most desirable on the Costa del Sol. El Higuero is a prestigious and rapidly developing area with excellent infrastructure. The beach is just a short walk away, the train station is nearby, and Málaga Airport is only 15 minutes by car. Just next door is the exclusive Higuero Resort, offering a Michelin-starred restaurant, tennis and padel courts, a fully equipped gym, spa, and both indoor and outdoor swimming pools. This is a opportunity to own a brand-new, move-in ready home with high-end features and an unbeatable location.



Spécification:

Caractéristiques

- Terrasse couverte
- Ascenseur
- Près du transport
- Terrasse privée
- Pièce de stockage
- Salle de bain
- Double vitrage
- Armoires encastrées
- Accès aux personnes à mobilité réduite

Vues

- Mer
- Panoramique

Piscine

- Communautaire
- Private

Jardin

- Communautaire

Orientation

- Sud-ouest

Paramètre

- Urbanisation
- Proche des magasins
- Près des écoles
- Près de la ville

Meubles

- Non meublé

Sécurité

- Complexe fermé
- Système d'alarme

Contrôle du climat

- Climatisation
- Chauffage central

Condition

- Excellent
- Nouvelle construction

Cuisine

- Entièrement équipée

Parking

- Souterrain
- Private