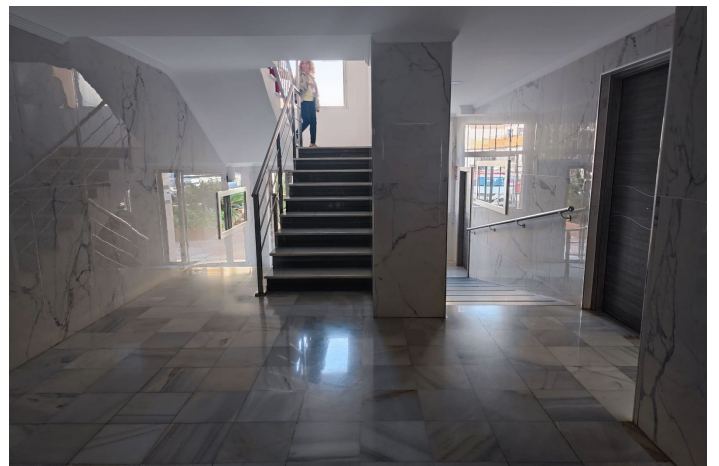
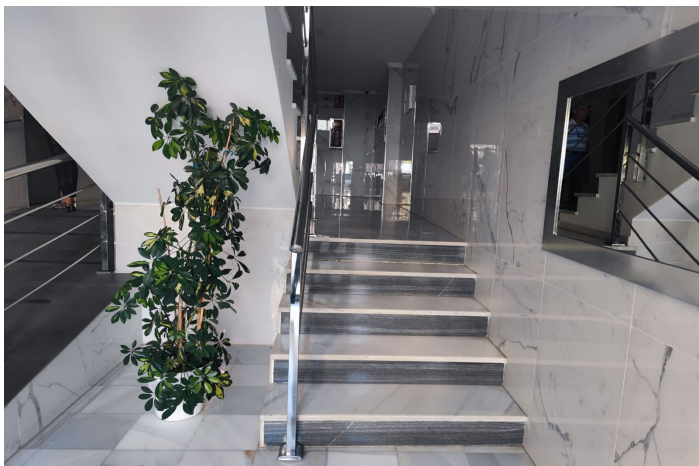




Lejlighed i midten etage til salg i Marbella

287.000 €

Reference: R5218501 Soveværelser: 2 Badeværelser: 1 Byg Størrelse: 88m²





Costa del Sol, San Pedro de Alcántara

This cosy two-bedroom, one-bathroom flat is located in the heart of San Pedro Alcántara, one of the most sought-after areas on the Costa del Sol. Thanks to its excellent location, you can enjoy all amenities—shops, cafés, schools and public transport—literally on your doorstep. Upon entering, we find a spacious living room that becomes the heart of the home. Thanks to its generous size, it allows you to create different areas, such as a relaxation area, dining area and reading or television area. In addition, the living room connects directly to a private terrace, ideal for enjoying the Mediterranean climate, having breakfast outdoors or relaxing at the end of the day. Next, the property has a large and bright kitchen, perfectly equipped and with enough space for a side table or a breakfast bar. Its size and layout make it the perfect place to cook comfortably and get together with family or friends. The sleeping area consists of two spacious and well-ventilated bedrooms. The master bedroom has a built-in wardrobe and plenty of natural light, while the second bedroom can be used as a bedroom, study or guest room, depending on your needs. The bathroom is complete and very functional, with a bathtub and shower for added comfort. It has light-coloured wall tiles, which provide brightness and a feeling of cleanliness. It has a washbasin with vanity unit, large mirror and good ventilation system. The bathroom is complete and very functional, with a bathtub and shower for added convenience. It has light-coloured wall tiles, which bring brightness and a feeling of cleanliness. It has a washbasin with vanity unit, large mirror and good ventilation system. The shower is practical for everyday use, while the bathtub offers an ideal space to relax. Overall, it is a comfortable, well-designed bathroom with everything you need for everyday use. The shower is practical for everyday use, while the bathtub offers an ideal space to relax.



Funktioner:

Funktioner

Dækket terrasse

Løfte op

Monterede garderobereskabe

Tilstand

godt

Synspunkter

Gade

Urban

Møbel

Ikke møbleret

Indstilling

Kommercielt område

Tæt på butikker

Tæt på skoler

Landsby

Køkken

Fuldt monteret