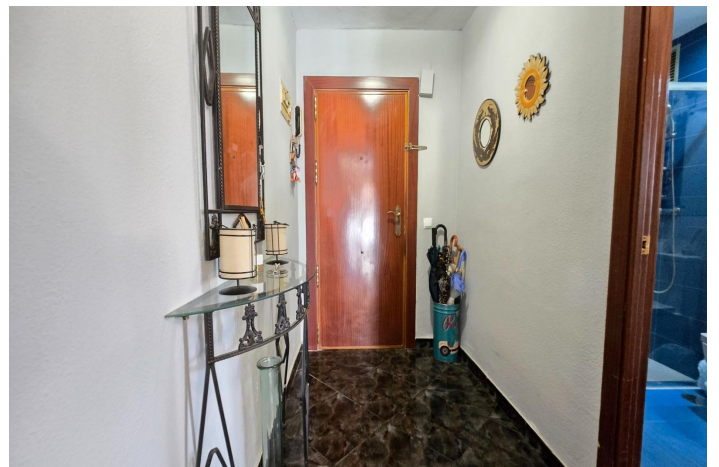




Appartement op de begane grond te koop in Benalmádena

350.000 €

Referentie: R5252806 Slaapkamers: 3 Badkamers: 2 Perceelgrootte: 137m²





Costa del Sol, Benalmádena (town)

We present this spacious and bright apartment located in the heart of Arroyo de la Miel, Benalmádena. With a constructed area of 136 m², this property offers an ideal space for families or those looking for comfort. It has two spacious double bedrooms and a single bedroom, complemented by two well-distributed bathrooms. It also has built-in wardrobes, an independent kitchen with a laundry room, and a spacious living room with access to a sunny 7m² terrace. Its southwest orientation guarantees natural light throughout the day. It has private parking and a communal pool. The location is unbeatable: just one thousand meters from the beach, it is surrounded by all essential services: shopping centers, schools, and even nearby hospitals; it also has direct access to public transport including buses and a commuter train that effectively connects with Malaga city as well as the international airport, AVE station, and the University of Malaga. If you are looking to live in a central area without sacrificing tranquility or modern comforts, this apartment may be your next investment! In compliance with the decree of the Junta de Andalucía 218-2005 of October 11, clients are informed that notary, registry, and I. T. P. expenses are not included in the price. We remind you that as a consumer you have the right to be informed and provided with the corresponding information documentation, as the case may be, based on the provisions of Decree 218/05 of October 11 that regulates the Consumer Information Regulations in the sale and rental of homes in Andalusia.



Kenmerken:

Kenmerken

Tillen
Privéterras
Bijkeuken
Toegang voor mensen met verminderde
mobiliteit

Voorwaarde

Renovatie vereist

Parkeergelegenheid

Garage

Oriëntatie

Zuidwesten

Pool

Gemeenschappelijk

Klimaatcontrole

Centrale verwarming

Meubilair

Niet ingericht