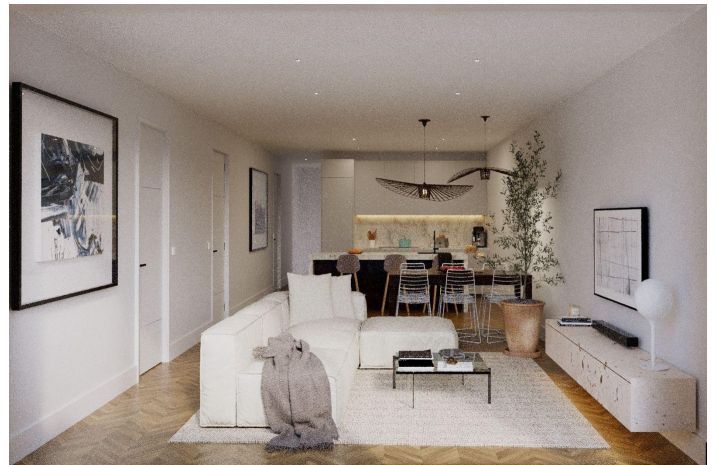
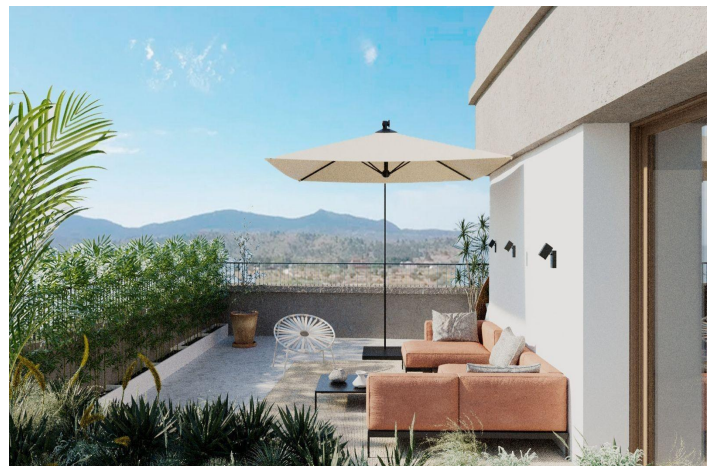




# Apartment for sale in Hondón de las Nieves

305,000 €

Reference: N8774 Bedrooms: 3 Bathrooms: 2 Build Size: 127m<sup>2</sup> Terrace: 38m<sup>2</sup>





## Vinalopó Medio, Hondón de las Nieves

Exclusive New Build Apartments with Views of the Vineyards in Hondón de las Nieves; Modern Homes in a Unique Natural Setting; Discover this new development of flats in Hondón de las Nieves, a charming village set in a beautiful valley surrounded by olive and almond groves. This development offers 15 exclusive 2 and 3 bedroom homes, all designed to offer maximum comfort, energy efficiency and stunning views of the Vinalopó vineyards; Located in Vinalopó Medio, this peaceful enclave is ideal for those seeking a relaxed Mediterranean lifestyle, with easy access to nature and all essential services; High Quality Features and Modern Design; Each flat has been designed with top quality materials and a functional layout, offering; Spacious and open-plan living spaces, ideal for modern living; Fully fitted kitchens with granite worktops; Top of the range bathrooms with built-in cisterns and top quality sanitary ware; Energy efficiency with aerothermal system for hot water; Pre-installation of ducted air conditioning, guaranteeing comfort in all seasons; Aluminium windows with double glazing, providing thermal and acoustic insulation; Reinforced security entrance door for peace of mind; Parking space and storage room in basement, included in the price; Lift in the building, ensuring accessibility and comfort; Solar panels on the rooftop to improve energy efficiency and reduce maintenance costs; In addition, the residential has a communal swimming pool, perfect for enjoying the Mediterranean climate; Privileged location in Hondón de las Nieves; Hondón de las Nieves is a town with a great wine-growing tradition, famous for its table grapes with the Vinalopó denomination of origin. Surrounded by the Sierra de Crevillente, the area offers numerous hiking trails, natural areas and a rich cultural and historical offer; From your new home, you will have quick access to the main points of interest in the area; Alicante Airport - 30 km (30 minutes by car); Alicante Beaches - 35 km (35 minutes by car); Elche - 20 km (20 minutes by car); Crevillente Natural Park - 10 km (15 minutes drive); Golf Courses - 25 km (30 minutes drive); An Ideal Home on the Costa Blanca; Enjoy the tranquillity of the Hondón Valley, without giving up the proximity to Alicante and Elche. Whether as a permanent residence, holiday home or investment property, these modern flats are an unbeatable choice; Contact us today for more information or to arrange a viewing;



## Features:

### Features

Parking - Space  
Near schools  
Communal Pool  
Number of Parking Spaces: 1  
Gated  
Storage / Trastero  
Air Conditioning: Pre-Installed  
Double Bedrooms: 3  
Elevator/Lift  
Terrace: 38 Msq.  
Useable Build Space: 107 Msq.  
Location: Rural, Urbanisation

### Energy Rating

B

### CO2 Emission Rating

B