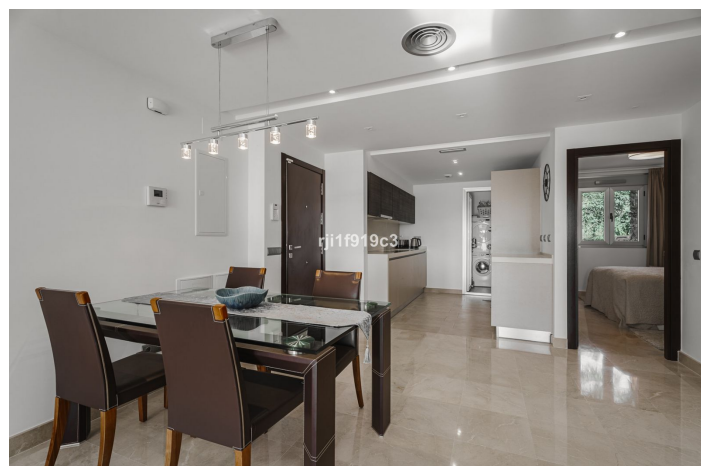


## Lejlighed i midten etage til salg i Marbella

335.000 €

Reference: R4892428 Soveværelser: 2 Badeværelser: 2 Byg Størrelse: 86m<sup>2</sup> Terrasse: 22m<sup>2</sup>



---

## Costa del Sol, La Mairena

La Mairena is a residential in a beautiful environment, declared a natural biosphere reserve by UNESCO, and only 7 kilometres from Elviria beach, east of Marbella. The residential is surrounded by a strikingly beautiful cork forest with sea views. La Mairena is a residential area you can enjoy all year round. Having a relaxed atmosphere, undisturbed by any noise from traffic yet close to good-quality road links to the centre of Marbella.

Excellent location: between forests and only 7 kilometres from Elviria beach and with free access to the golf El Soto. Málaga Airport is 40 km away, and just 20 minutes by car to the centre of Marbella. Its proximity to some of the best golf courses in the Costa del Sol allows you to experience the true pleasures of a Mediterranean life style. This community is located in the proximity of the famous German college and just a few minutes walk to El Soto Golf. All owners at this community in La Mairena have access to the nine-hole, par 3 El Soto Golf Course, which also has a gym, padel court, sauna and a clubhouse with a restaurant. Within five minutes drive, you can also play golf on the famous 60-hole La Cala Golf Resort and the 18-hole Santa Maria Golf Country Club.

The apartment has 2 complete bathrooms, an open-plan kitchen and a terrace which is directly accessible from both the lounge and the master bedroom. The apartment is built to the highest standard with first-class finishes including a modern designed integrated kitchen with quartz worktop, thermal and acoustic insulation, air-conditioning, solar powered heater and automatic permanent ventilation system in all rooms. Each block has its own elevator and exterior carpentry finishes in aluminium. There is outdoor private parking. Don't miss this opportunity!

## Funktioner:

### Funktioner

Løfte op

Privat terrasse

Dobbeltvindue

Gymnastiksal

Tennisbane

### Synspunkter

Hav

bjerg

Panoramisk

Land

Have

Pool

### Pool

Kommunal

### Have

Kommunal

### Orientering

Syd

### Indstilling

Tæt på golf

Tæt på skoler

### Møbel

Valgfri

### Sikkerhed

Alarmsystem

Indgangstelefon

### Klima kontrol

Aircondition

Centralvarme

### Tilstand

Fremragende

### Køkken

Fuldt monteret

Delvist monteret

### Parkering

Kommunal