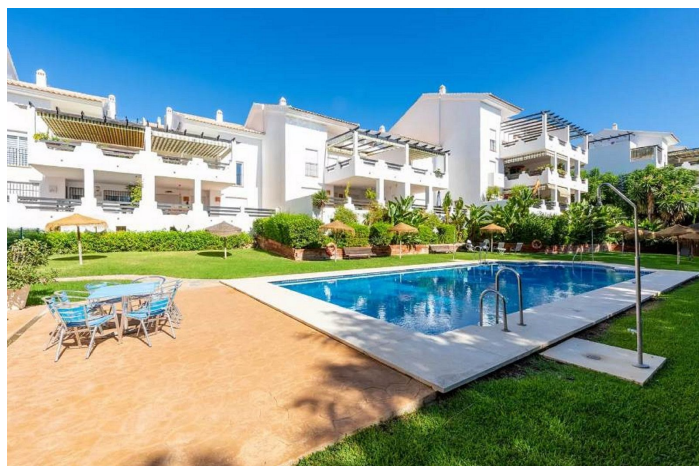
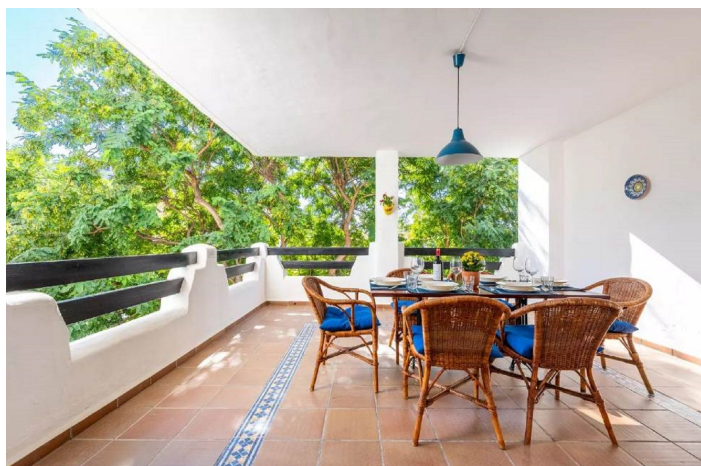




## Appartement au milieu à vendre à Benalmádena

485 000 €

Référence: R4896076    Chambres: 3    Bain: 2    Construite: 118m<sup>2</sup>    Terrasse: 43m<sup>2</sup>





---

## Costa del Sol, Benalmadena Costa

Bright magnificent 3 bedroom, 2 bathroom apartment located just 500 mts from the beach in the sought after Atalaya Golf urbanization, in the area of Nueva Torrequebrada, for those looking for a home that combines spaciousness, comfort and an unbeatable location.

This flat stands out for its generous space and natural luminosity. Upon entering, you will find an elegant entrance hall with a wardrobe that leads to a spacious square-shaped living/dining room, ideal for enjoying time with family and friends. From here, you access a large terrace, perfect for relaxing and enjoying the Mediterranean climate.

The fully fitted and equipped kitchen has a practical utility room, making day-to-day tasks easier. The distribution includes two double bedrooms with fitted wardrobes, a complete bathroom, and the master bedroom with large fitted wardrobes, en-suite bathroom with window, and its own private terrace making it a true retreat.

This fantastic property comes with an underground parking space and a large storage room with good storage capacity.

The building has a lift that connects the flat to the garage floor.

The complex, designed in a charming Mediterranean village style, is an oasis of tranquillity and security. Enjoy its well-kept communal gardens, three swimming pools, sauna, gymnasium and leisure room, all designed for your wellbeing. In addition, the location is unbeatable: just a few steps away you will find bus stops, shops, bars, international restaurants and, of course, the beach.

Don't miss the opportunity to live in a privileged environment, surrounded by nature and with all amenities at your fingertips. This flat in Atalaya Golf is more than a property; it is a lifestyle, contact us for more information and to arrange a viewing!



## Spécification:

### Caractéristiques

Terrasse couverte  
Ascenseur  
Près du transport  
Terrasse privée  
Pièce de stockage  
Salle de bain  
Sol en marbre  
Double vitrage  
Armoires encastrées  
Wifi  
Buanderie  
Salle de sport  
Salle de jeux  
Sauna

### Vues

Jardin  
Piscine

### Piscine

Communautaire

### Jardin

Communautaire

### Catégorie

Luxe  
Revente  
Le golf

### Orientation

Sud-Est

### Paramètre

Près du golf  
Urbanisation  
Proche des magasins  
Près des écoles  
Près de la mer  
De banlieue

### Meubles

Partie fournie

### Parking

Souterrain

### Cote d'énergie

C

### Contrôle du climat

Climatisation  
Chauffage central

### Condition

Excellent

### Cuisine

Entièrement équipée

### Services publics

Électricité  
Eau potable  
Gaz

### Cote d'émission de CO2

D