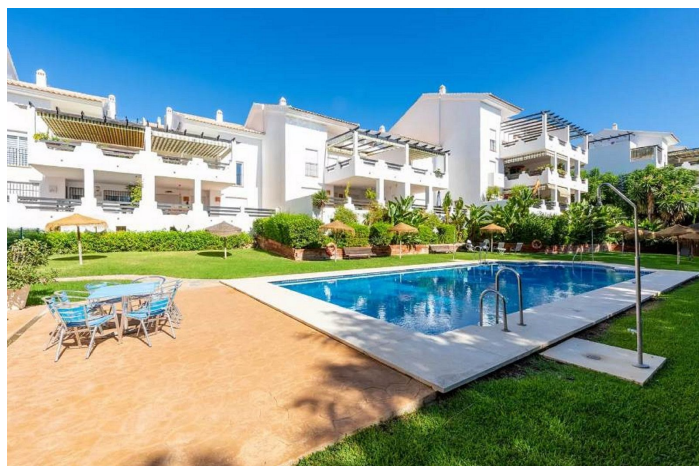
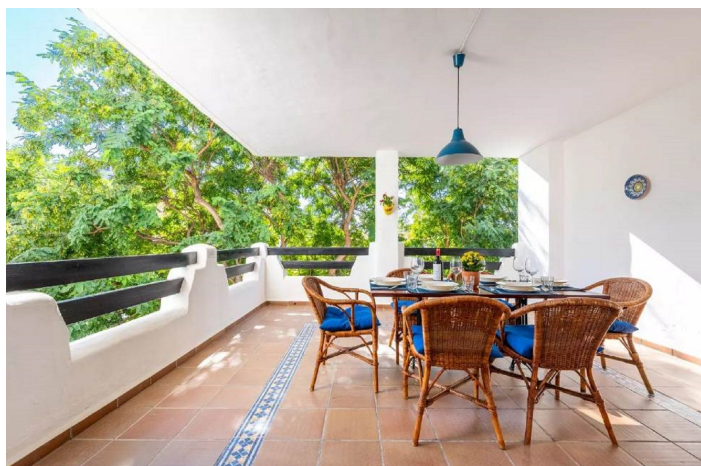




Middenverdieping appartement te koop in Benalmádena

485.000 €

Referentie: R4896076 Slaapkamers: 3 Badkamers: 2 Perceelgrootte: 118m² Terras: 43m²





Costa del Sol, Benalmadena Costa

Bright magnificent 3 bedroom, 2 bathroom apartment located just 500 mts from the beach in the sought after Atalaya Golf urbanization, in the area of Nueva Torrequebrada, for those looking for a home that combines spaciousness, comfort and an unbeatable location.

This flat stands out for its generous space and natural luminosity. Upon entering, you will find an elegant entrance hall with a wardrobe that leads to a spacious square-shaped living/dining room, ideal for enjoying time with family and friends. From here, you access a large terrace, perfect for relaxing and enjoying the Mediterranean climate.

The fully fitted and equipped kitchen has a practical utility room, making day-to-day tasks easier. The distribution includes two double bedrooms with fitted wardrobes, a complete bathroom, and the master bedroom with large fitted wardrobes, en-suite bathroom with window, and its own private terrace making it a true retreat.

This fantastic property comes with an underground parking space and a large storage room with good storage capacity.

The building has a lift that connects the flat to the garage floor.

The complex, designed in a charming Mediterranean village style, is an oasis of tranquillity and security. Enjoy its well-kept communal gardens, three swimming pools, sauna, gymnasium and leisure room, all designed for your wellbeing. In addition, the location is unbeatable: just a few steps away you will find bus stops, shops, bars, international restaurants and, of course, the beach.

Don't miss the opportunity to live in a privileged environment, surrounded by nature and with all amenities at your fingertips. This flat in Atalaya Golf is more than a property; it is a lifestyle, contact us for more information and to arrange a viewing!



Kenmerken:

Kenmerken

Overdekt terras
Tillen
Nabij transport
Privéterras
Opslagruimte
Ensuite badkamer
Marmeren vloeren
Dubbel glas
Op maat gemaakte kledingkasten
Wifi
Bijkeuken
Sportschool
Spelletjeskamer
Sauna

Keer bekeken

Tuin
Pool

Pool

Gemeenschappelijk
Tuin
Gemeenschappelijk

Categorie

Luxe
Wederverkoop
Golf

Oriëntatie

Zuidoost

Instelling

Dicht bij golf
Verstedelijking
Dicht bij winkels
Dicht bij scholen
Dicht bij zee
Voorsteden

Meubilair

Deels ingericht
Parkeergelegenheid
Ondergronds

Energiebeoordeling

C

Klimaatcontrole

Airconditioning
Centrale verwarming

Voorwaarde

Uitstekend

Keuken

Geheel op maat gemaakt
Nutsvoorzieningen
Elektriciteit
Drinkbaar water
Gas
CO2 -emissierating
D