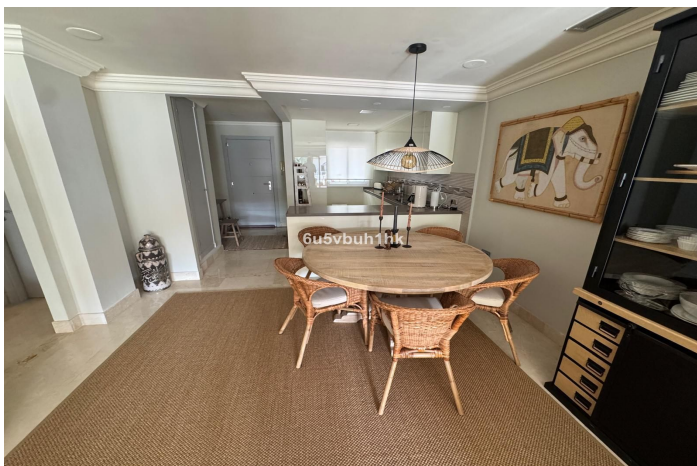


## Middle Floor Apartment for sale in Marbella

515,000 €

Reference: R4918588 Bedrooms: 2 Bathrooms: 2 Build Size: 111m<sup>2</sup>



---

## Costa del Sol, Nueva Andalucía

This exquisite luxury apartment, located within the prestigious Aloha Hill Club urbanisation, offers a harmonious blend of refined comfort and five-star resort living. Designed to meet the needs of discerning residents, it is fully furnished with sophisticated style, ready for immediate occupancy, and promises a lifestyle of ease and relaxation.

The apartment features two spacious bedrooms, thoughtfully designed for comfort and elegance. The master bedroom boasts an en-suite bathroom adorned with premium marble finishes, enhancing its sense of luxury. A second beautifully appointed bathroom, also with marble details, adds to the overall refinement of the interior spaces. The heart of the home is the open-plan kitchen, which has been meticulously refurbished to offer a modern, seamless flow into the living areas. Equipped with top-quality appliances and stylish cabinetry, it is both functional and visually striking.

From the living area, large glass doors lead to a generous terrace, a serene outdoor haven ideal for enjoying breathtaking views of the sparkling Mediterranean Sea, meticulously landscaped gardens, and the inviting pool areas. This space is perfect for al fresco dining, entertaining guests, or simply unwinding with the tranquil scenery as a backdrop.

The Aloha Hill Club itself is renowned for its exclusive atmosphere and unparalleled amenities. The urbanisation is reminiscent of a luxurious holiday resort, attracting VIP guests and residents seeking the finest in comfort and convenience. Its state-of-the-art facilities include multiple swimming pools, one of which is a semi-Olympic size, covered and heated for year-round enjoyment. A luxurious spa complex offers a wide range of treatments, complemented by a Jacuzzi, hydrotherapy installations, a Turkish bath, and a sauna, providing the ultimate retreat for relaxation.

For wine enthusiasts, the development features a private wine cellar where exclusive wine-tasting events are held. A stylish poolside restaurant and bar serve exquisite Mediterranean cuisine, creating the perfect setting for leisurely meals or refreshing drinks by the water. The dedicated Kids' Club ensures younger residents are entertained with activities designed for their enjoyment.

A hallmark of the Aloha Hill Club is its exceptional concierge service, delivering a suite of premium offerings to its residents. These include comprehensive cleaning and laundry services, grocery shopping, car and bike rentals, and even a private shuttle to Puerto Banús and the airport. Catering services and the option to hire a private chef are also available, enhancing the resort-style experience. Security is paramount, with 24-hour surveillance ensuring peace of mind.

Nestled in the serene yet vibrant enclave of Nueva Andalucía, the apartment offers proximity to some of the region's most famous golf courses, making it an ideal choice for enthusiasts of the sport. The area is a favorite among holidaymakers and families alike, known for its excellent amenities, upscale shops, and diverse dining options. Its quiet, family-oriented environment is complemented by prestigious international schools and easy access to nature, offering a balanced lifestyle between leisure and sophistication.

This remarkable property is more than a home; it is a retreat where luxury, comfort, and unparalleled service converge, making it a perfect sanctuary for those seeking an elevated living experience in one of Marbella's most esteemed locations.

## Features:

### Features

Lift  
Private Terrace  
Storage Room  
Ensuite Bathroom  
Marble Flooring  
Double Glazing  
24 Hour Reception  
Fitted Wardrobes  
Jacuzzi  
Bar  
Gym  
Restaurant On Site

Sauna

### Views

Sea  
Panoramic  
Garden  
Pool

### Furniture

Fully Furnished

### Security

Gated Complex  
24 Hour Security  
Electric Blinds  
Entry Phone

### Category

Holiday Homes  
Investment  
Luxury  
Resale  
With Planning Permission

### Orientation

South East

### Setting

Close To Golf  
Urbanisation  
Close To Sea  
Close To Shops  
Close To Town  
Close To Schools

### Kitchen

Fully Fitted

### Parking

Underground  
Communal

### Energy Rating

E

### Climate Control

Air Conditioning  
Hot A/C

### Pool

Communal  
Heated

### Garden

Communal  
Landscaped

### Utilities

Electricity  
Drinkable Water  
Telephone

### CO2 Emission Rating

E