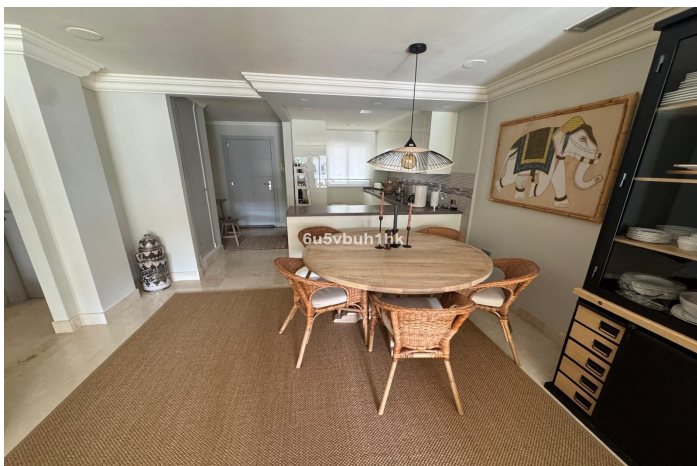


Appartement au milieu à vendre à Marbella

515 000 €

Référence: R4918588 Chambres: 2 Bain: 2 Construite: 111m²



Costa del Sol, Nueva Andalucía

This exquisite luxury apartment, located within the prestigious Aloha Hill Club urbanisation, offers a harmonious blend of refined comfort and five-star resort living. Designed to meet the needs of discerning residents, it is fully furnished with sophisticated style, ready for immediate occupancy, and promises a lifestyle of ease and relaxation.

The apartment features two spacious bedrooms, thoughtfully designed for comfort and elegance. The master bedroom boasts an en-suite bathroom adorned with premium marble finishes, enhancing its sense of luxury. A second beautifully appointed bathroom, also with marble details, adds to the overall refinement of the interior spaces. The heart of the home is the open-plan kitchen, which has been meticulously refurbished to offer a modern, seamless flow into the living areas. Equipped with top-quality appliances and stylish cabinetry, it is both functional and visually striking.

From the living area, large glass doors lead to a generous terrace, a serene outdoor haven ideal for enjoying breathtaking views of the sparkling Mediterranean Sea, meticulously landscaped gardens, and the inviting pool areas. This space is perfect for al fresco dining, entertaining guests, or simply unwinding with the tranquil scenery as a backdrop.

The Aloha Hill Club itself is renowned for its exclusive atmosphere and unparalleled amenities. The urbanisation is reminiscent of a luxurious holiday resort, attracting VIP guests and residents seeking the finest in comfort and convenience. Its state-of-the-art facilities include multiple swimming pools, one of which is a semi-Olympic size, covered and heated for year-round enjoyment. A luxurious spa complex offers a wide range of treatments, complemented by a Jacuzzi, hydrotherapy installations, a Turkish bath, and a sauna, providing the ultimate retreat for relaxation.

For wine enthusiasts, the development features a private wine cellar where exclusive wine-tasting events are held. A stylish poolside restaurant and bar serve exquisite Mediterranean cuisine, creating the perfect setting for leisurely meals or refreshing drinks by the water. The dedicated Kids' Club ensures younger residents are entertained with activities designed for their enjoyment.

A hallmark of the Aloha Hill Club is its exceptional concierge service, delivering a suite of premium offerings to its residents. These include comprehensive cleaning and laundry services, grocery shopping, car and bike rentals, and even a private shuttle to Puerto Banús and the airport. Catering services and the option to hire a private chef are also available, enhancing the resort-style experience. Security is paramount, with 24-hour surveillance ensuring peace of mind.

Nestled in the serene yet vibrant enclave of Nueva Andalucía, the apartment offers proximity to some of the region's most famous golf courses, making it an ideal choice for enthusiasts of the sport. The area is a favorite among holidaymakers and families alike, known for its excellent amenities, upscale shops, and diverse dining options. Its quiet, family-oriented environment is complemented by prestigious international schools and easy access to nature, offering a balanced lifestyle between leisure and sophistication.

This remarkable property is more than a home; it is a retreat where luxury, comfort, and unparalleled service converge, making it a perfect sanctuary for those seeking an elevated living experience in one of Marbella's most esteemed locations.

Spécification:

Caractéristiques

Ascenseur
Terrasse privée
Pièce de stockage
Salle de bain
Sol en marbre
Double vitrage
Réception 24 heures
Armoires encastrées
Jacuzzi
Bar
Salle de sport
Restaurant sur place
Sauna

Vues

Mer
Panoramique
Jardin
Piscine

Meubles

Entièrement meublé

Sécurité

Complexe fermé
Sécurité 24 heures
Stores électriques
Téléphone d'entrée

Catégorie

Maison de vacances
Investissement
Luxe
Revente
Avec permis de construire

Orientation

Sud-Est

Paramètre

Près du golf
Urbanisation
Près de la mer
Proche des magasins
Près de la ville
Près des écoles

Cuisine

Entièrement équipée

Parking

Souterrain
Communautaire

Cote d'énergie

E

Contrôle du climat

Climatisation
A / C chaud

Piscine

Communautaire
Chauffé

Jardin

Communautaire
Aménagé
Services publics
Électricité
Eau potable
Téléphone

Cote d'émission de CO2

E