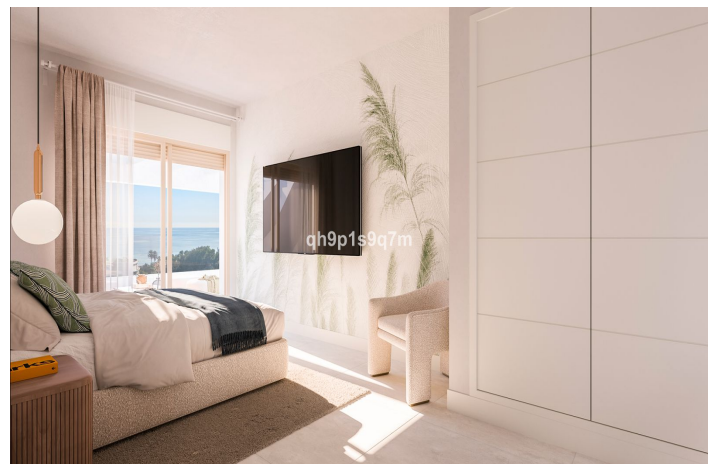
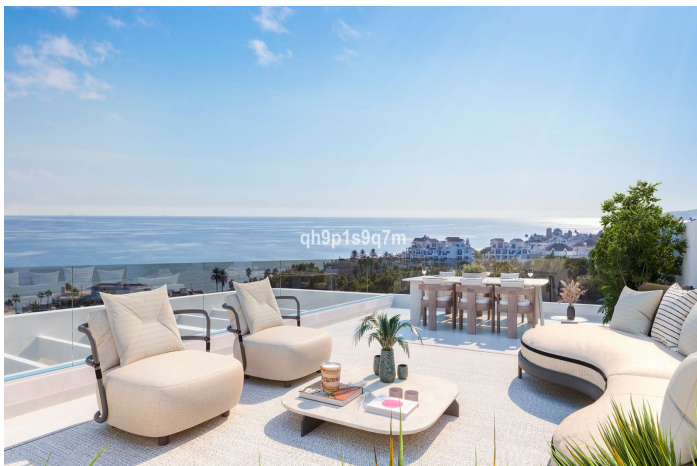


Apartamento en planta baja en venta en Estepona

350.000 - 890.000 €

Referencia: R4922596 Dormitorios: 1 - 3 Baños: 1 - 2 Construido: 69m² - 141m² Terraza: 20m² - 93m²



Costa del Sol, Estepona (town)

An exclusive promotion of 25 units (1 to 3 bedrooms) in one of the expanding areas of Estepona. Located just minutes from the best beaches and offering access to a wide range of services, this opportunity perfectly combines nature and modernity.

This development is situated in the western area of Estepona, just a few kilometers from the town center, and located next to the peaceful Arroyo Enmedio neighborhood. This area stands out for its proximity to the serene and spacious beaches of Arroyo Vaquero and its remarkable urban development in recent years, currently being one of the fastest-growing areas on the Costa del Sol.

All the units in this development have been designed for those seeking a home that combines luxury and functionality. The spacious rooms are carefully distributed to offer comfort and versatility, making every corner a perfect place to relax and enjoy. Its strategic orientation ensures that all homes make the most of natural light and the stunning open sea views.

The high-quality materials selected for each unit enhance their exclusive character. The large-format porcelain floors not only provide elegance but also durability and easy maintenance, ideal for everyday living. The large windows, in addition to offering panoramic views, allow natural light to flood the interiors throughout the day, creating a warm and welcoming atmosphere that adapts perfectly to every moment.

The lifestyle in this development extends outdoors thanks to its generous terraces and solariums. These spaces have been designed to become the heart of each home, ideal for gatherings with friends, outdoor dining, or simply enjoying the tranquility of the surroundings while the sun sets on the horizon.

Características:

Características

Terraza
Elevar
Terraza
Trastero
Doble acristalamiento
Armarios empotrados
Gimnasia
Solárium

Puntos de vista

Mar
Panoramic
Jardín
Piscina

Piscina

Comunal

Seguridad

Complejo cerrado
Sistema de alarmas
Teléfono de entrada

Orientación

Sureste
Noreste

Configuración

Cerca del mar
Cerca de las tiendas
Cerca de Marina

Cocina

Fully Fitted

Estacionamiento

Cochera
Comunal

Control climatico

Fría de aire acondicionado
A/C caliente

Condición

Nueva construcción

Jardín

Comunal
Ajardinado

Categoría

Nuevo desarrollo