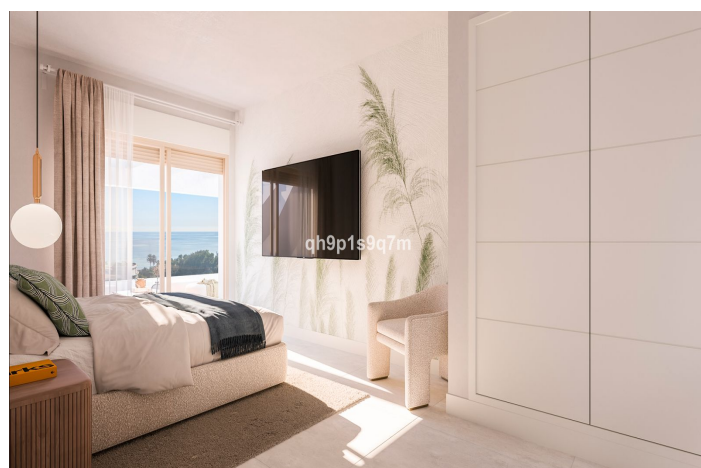
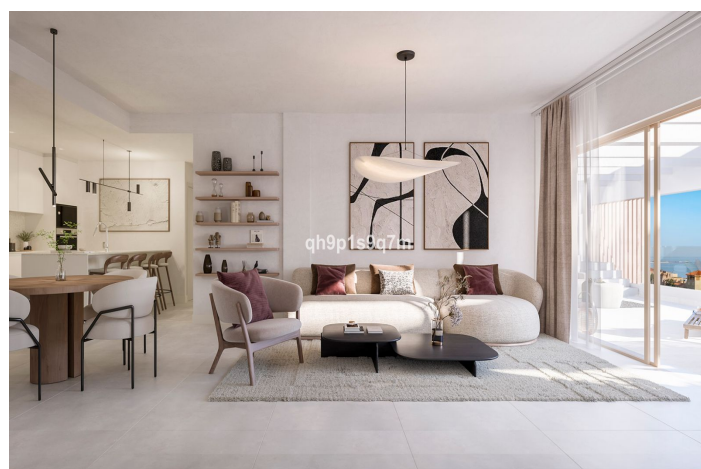
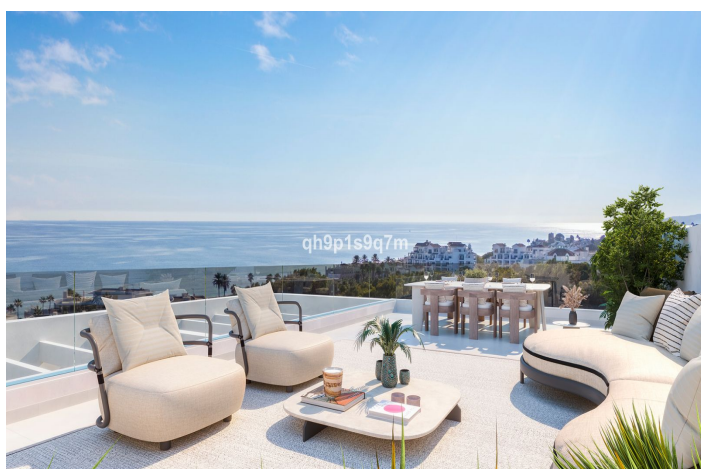


Appartement au rez-de-chaussée à vendre à Estepona 350 000 - 890 000 €

Référence: R4922596 Chambres: 1 - 3 Bain: 1 - 2 Construite: 69m² - 141m² Terrasse: 20m² - 93m²



Costa del Sol, Estepona (town)

An exclusive promotion of 25 units (1 to 3 bedrooms) in one of the expanding areas of Estepona. Located just minutes from the best beaches and offering access to a wide range of services, this opportunity perfectly combines nature and modernity.

This development is situated in the western area of Estepona, just a few kilometers from the town center, and located next to the peaceful Arroyo Enmedio neighborhood. This area stands out for its proximity to the serene and spacious beaches of Arroyo Vaquero and its remarkable urban development in recent years, currently being one of the fastest-growing areas on the Costa del Sol.

All the units in this development have been designed for those seeking a home that combines luxury and functionality. The spacious rooms are carefully distributed to offer comfort and versatility, making every corner a perfect place to relax and enjoy. Its strategic orientation ensures that all homes make the most of natural light and the stunning open sea views.

The high-quality materials selected for each unit enhance their exclusive character. The large-format porcelain floors not only provide elegance but also durability and easy maintenance, ideal for everyday living. The large windows, in addition to offering panoramic views, allow natural light to flood the interiors throughout the day, creating a warm and welcoming atmosphere that adapts perfectly to every moment.

The lifestyle in this development extends outdoors thanks to its generous terraces and solariums. These spaces have been designed to become the heart of each home, ideal for gatherings with friends, outdoor dining, or simply enjoying the tranquility of the surroundings while the sun sets on the horizon.

Spécification:

Caractéristiques

Terrasse couverte

Ascenseur

Terrasse privée

Pièce de stockage

Double vitrage

Armoires encastrées

Salle de sport

Solarium

Vues

Mer

Panoramique

Jardin

Piscine

Piscine

Communautaire

Sécurité

Complexe fermé

Système d'alarme

Téléphone d'entrée

Orientation

Sud-Est

Nord-Est

Paramètre

Près de la mer

Proche des magasins

Près de Marina

Cuisine

Entièrement équipée

Parking

Garage

Communautaire

Contrôle du climat

Cold A / C

A / C chaud

Condition

Nouvelle construction

Jardin

Communautaire

Aménagé

Catégorie

Nouveau développement