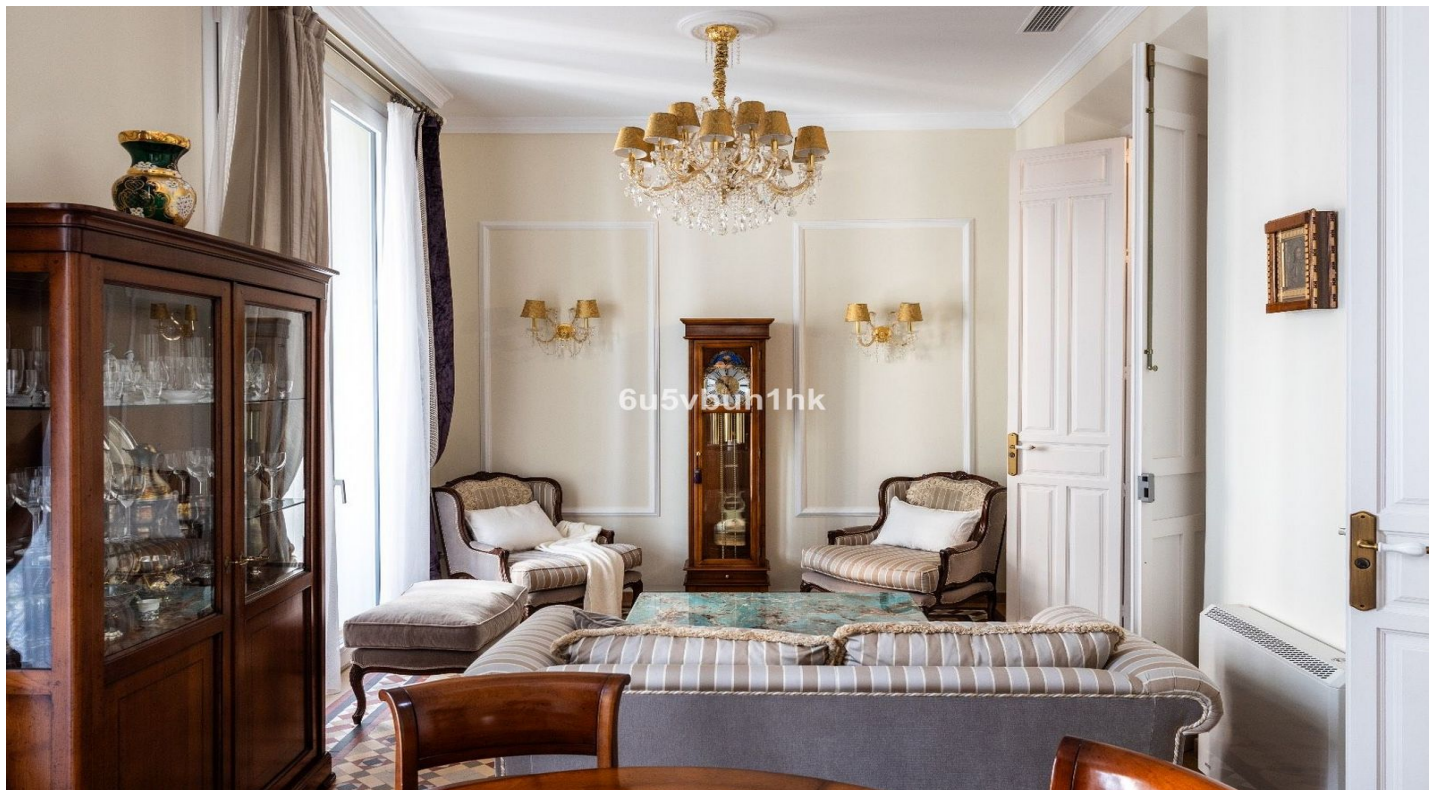


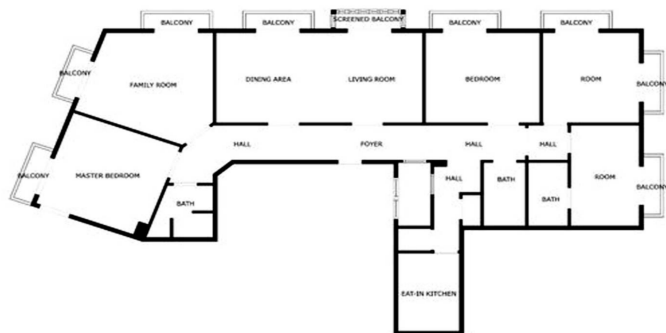
Appartement au milieu à vendre à Málaga

895 000 €

Référence: R4764928 Chambres: 5 Bain: 3 Terrain: 176m² Construite: 176m²



6u5v6uh1hk



SIZES ARE APPROXIMATE, ACTUAL MAY VARY



6u5v6uh1hk



6u5v6uh1hk

Costa del Sol, Málaga

Welcome to one of the most elegant apartments for sale in the historic center. This beautiful early 20th-century building boasts graceful proportions, high ceilings, balconies, and bay windows overlooking the street. A true architectural gem now available for purchase. The apartment is located on the second floor of a building without an elevator. Upon entering, you will be impressed by the various doors and an elegant marble staircase. Inside the apartment, the theatricality of the decor stands out, featuring high ceilings, elegant drapery, green-toned walls, and stunning chandeliers, creating a captivating atmosphere at first glance. This is not an ordinary property, and its dramatic flair is a welcome feature. The 173 square meters of usable space are distributed through a long corridor into various rooms, all with street-facing balconies. The apartment occupies the entire floor and has a south-facing facade with two corners. The property includes 4 bedrooms, 3 bathrooms, a spacious living room with a dining area, a reading room, kitchen, and patio with its own access. One of the apartment's highlights is the original hydraulic tile flooring, which features different colors and patterns throughout the rooms. It also retains the original wooden shutters and bay windows. A standout feature of this property is the natural light it receives through its 8 balconies and street-facing bay window. The fantastic main southern orientation, with one corner facing east and the other west, ensures sunlight throughout the day. The kitchen offers the possibility of expansion, and we have a project in place to maximize its potential. All these details make this wonderful apartment truly special and captivating at first sight.

Spécification:

Caractéristiques

Près du transport

Double vitrage

Armoires encastrées

Près de l'église

Paramètre

Proche des magasins

Près des écoles

Contrôle du climat

Climatisation

Chauffage central

Sécurité

Système d'alarme

Vues

Urban