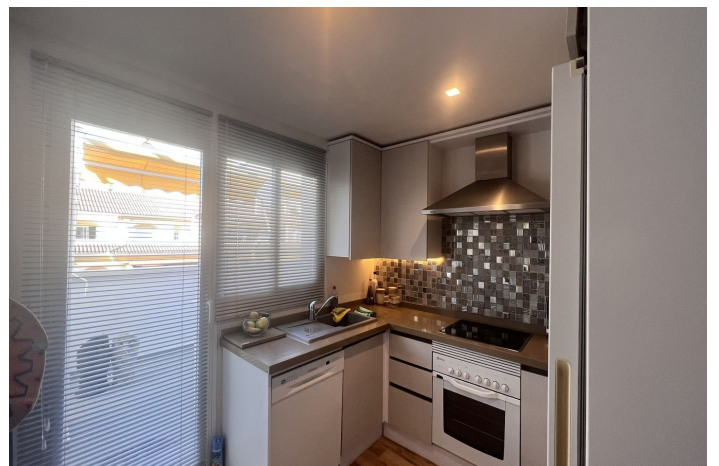


Penthouse for sale in Marbella

399,000 €

Reference: R4588066 Bedrooms: 1 Bathrooms: 1 Build Size: 75m² Terrace: 45m²



Costa del Sol, Nueva Andalucía

Great opportunity! Renovated and cozy PENTHOUSE in the Dama de Noche urbanization, just a few steps from Puerto Banús. Fantastic private urbanization with 24-hour security, paddle tennis court, large community gardens, 2 large swimming pool and restaurant. Excellent location, 5 or 10 minutes walk from Puerto Banús, the beach, surrounded by services and 10 minutes by car from Marbella Center.

It consists of a large terrace along the entire length of the house with a covered area, it has views of the mountains and the garden where you can appreciate the sunsets. The living-dining room, which has direct access to the terrace, and also to the fully equipped kitchen. It has 1 fairly spacious bedroom with access to the terrace and 1 bathroom with natural light.

Has TURISTIC LISENCE for short term rentals.

Includes an underground parking space.

Ideal as a regular home, vacation home or as an investment.

Penthouse, Nueva Andalucía, Costa del Sol.

1 Bedroom, 1 Bathroom, Built 95 m², Terrace 35 m².

Setting : Close To Sea, Close To Schools, Urbanisation.

Orientation : South West.

Condition : Excellent.

Pool : Communal.

Climate Control : Air Conditioning, Pre Installed A/C, Hot A/C, Cold A/C.

Views : Mountain, Panoramic, Garden.

Features : Covered Terrace, Lift, Fitted Wardrobes, Near Transport, Private Terrace, Solarium, Satellite TV, WiFi, Paddle Tennis, 24 Hour Reception, Restaurant On Site.

Furniture : Fully Furnished, Optional.

Kitchen : Fully Fitted.

Garden : Communal.

Security : Gated Complex, Electric Blinds, Entry Phone, 24 Hour Security.

Parking : Underground, Garage, Private.

Utilities : Electricity, Drinkable Water, Telephone, Gas.

Category : Holiday Homes, Investment, Luxury.

Features:

Features

Covered Terrace
Lift
Near Transport
Private Terrace
Satellite TV
24 Hour Reception
Fitted Wardrobes
WiFi
Solarium
Restaurant On Site
Paddle Tennis

Views

Mountain
Panoramic
Garden

Pool

Communal

Garden

Communal

Utilities

Electricity
Drinkable Water
Gas
Telephone

Orientation

South West

Setting

Urbanisation
Close To Sea
Close To Schools

Furniture

Fully Furnished
Optional

Security

Gated Complex
24 Hour Security
Electric Blinds
Entry Phone

Category

Holiday Homes
Investment
Luxury

Climate Control

Air Conditioning
Pre Installed A/C
Cold A/C
Hot A/C

Condition

Excellent

Kitchen

Fully Fitted

Parking

Underground
Garage
Private