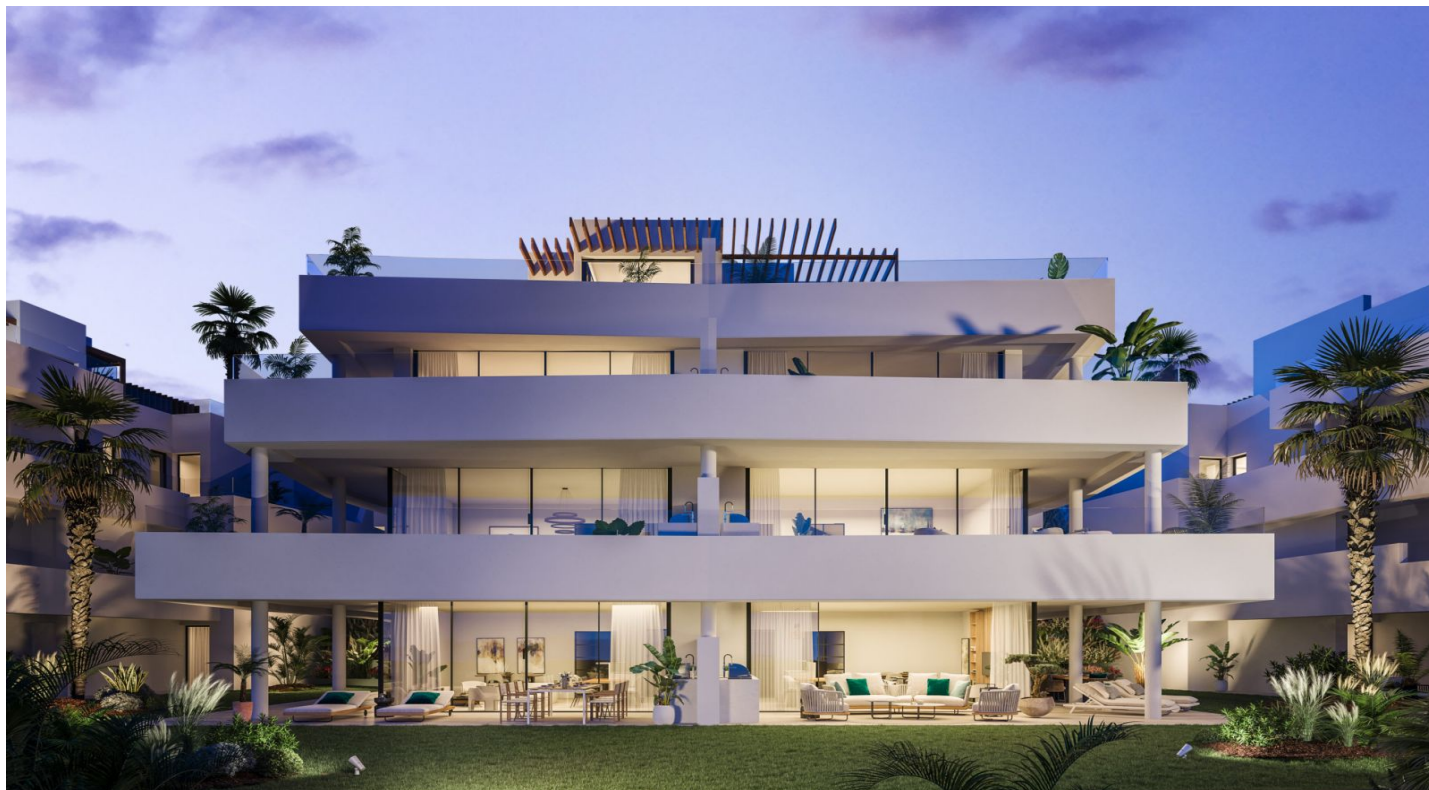


Ground Floor Apartment for sale in Estepona

767,415 - 963,991 €

Reference: R3636497 Bedrooms: 2 - 4 Bathrooms: 2 - 3 Build Size: 134m² - 282m² Terrace: 62m² - 172m²





Costa del Sol, Estepona (Town)

MINDFUL LIVING WITH SEA VIEW with a perfect balance of activity and peace of mind.

- 1.- Urban resort only 800m from the beautiful town Center of Estepona.
- 2.- Ideally located between Marbella and Sotogrande with unbeatable views to the Mediterranean Sea, Africa and Gibraltar.
- 3.- Unique with its elegant architecture and organic materials with tropical gardens, flowers and palm trees.
- 4.- We are environmentally friendly because the urbanisation collects rain water and reuses it for the irrigation system and the use of led lights and solar panels.
- 5.- The 28 hectares of urbanisation has one main private entrance with 24h security and surveillance cameras with Concierge Service
- 6.- In the Center pool area, there is a solar panel tempered swimming pool and restaurant open all year like a natural meeting point. Its possible to eat a great variety of meals.
- 7.- You can enjoy of 2600m2 of sports area with padel and tennis school and a 1.000 m2 of Reebok Gym.
- 8.- In the southern part of the urbanization another pool area with an 'infinity' design and amazing panoramic views of the Mediterranean Sea.
- 9.- Other activities are possible with Buggies, electrical bikes and children Play Area, a perfect place with incredible benefits for children
- 10.- For property owners who wants to rent out their property and obtain a return, the complex offers a holiday rental service located in the same urbanization. (recover your investment quickly) If your intention is investment we can talk about this point in more detail later.



Features:

Features

Covered Terrace
Near Transport
Private Terrace
Ensuite Bathroom
Fitted Wardrobes
Barbeque
Gym
Restaurant On Site
Paddle Tennis
Sauna

Views

Sea
Mountain
Panoramic

Kitchen

Fully Fitted

Parking

Underground

Orientation

South
South East
South West

Setting

Close To Shops

Garden

Communal
Landscaped

Category

Luxury
New Development

Climate Control

Cold A/C
Hot A/C
U/F Heating

Pool

Communal

Security

24 Hour Security
Electric Blinds