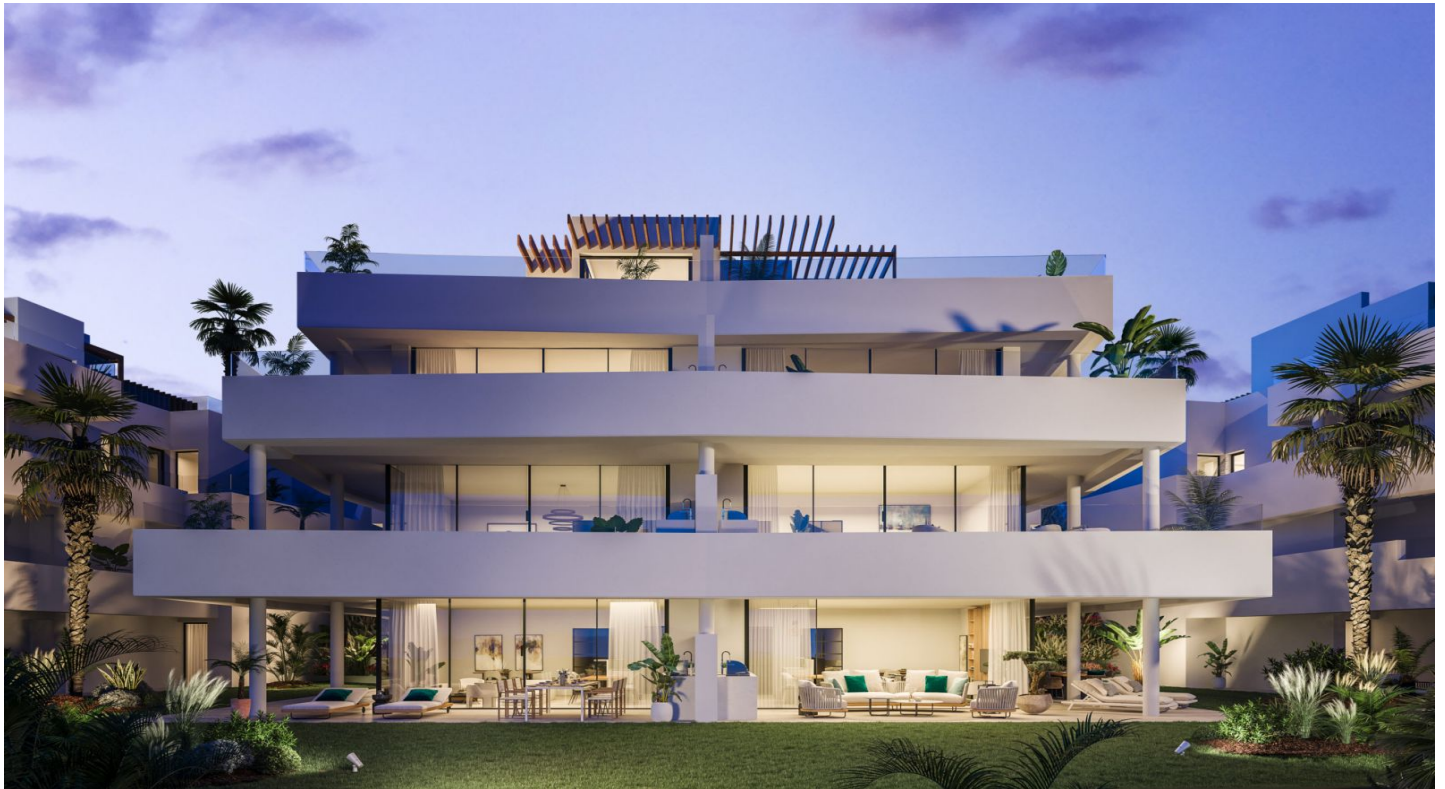


Appartement au rez-de-chaussée à vendre à Estepona 767 415 - 963 991 €

Référence: R3636497 Chambres: 2 - 4 Bain: 2 - 3 Construite: 134m<sup>2</sup> - 282m<sup>2</sup> Terrasse: 62m<sup>2</sup> - 172m<sup>2</sup>



## Costa del Sol, Estepona

MINDFUL LIVING WITH SEA VIEW with a perfect balance of activity and peace of mind.

- 1.- Urban resort only 800m from the beautiful town Center of Estepona.
- 2.- Ideally located between Marbella and Sotogrande with unbeatable views to the Mediterranean Sea, Africa and Gibraltar.
- 3.- Unique with its elegant architecture and organic materials with tropical gardens, flowers and palm trees.
- 4.- We are environmentally friendly because the urbanisation collects rain water and reuses it for the irrigation system and the use of led lights and solar panels.
- 5.- The 28 hectares of urbanisation has one main private entrance with 24h security and surveillance cameras with Concierge Service
- 6.- In the Center pool area, there is a solar panel tempered swimming pool and restaurant open all year like a natural meeting point. Its possible to eat a great variety of meals.
- 7.- You can enjoy of 2600m2 of sports area with padel and tennis school and a 1.000 m2 of Reebok Gym.
- 8.- In the southern part of the urbanization another pool area with an 'infinity' design and amazing panoramic views of the Mediterranean Sea.
- 9.- Other activities are possible with Buggies, electrical bikes and children Play Area, a perfect place with incredible benefits for children
- 10.- For property owners who wants to rent out their property and obtain a return, the complex offers a holiday rental service located in the same urbanization. (recover your investment quickly) If your intention is investment we can talk about this point in more detail later.

## Spécification:

### Caractéristiques

Terrasse couverte

Près du transport

Terrasse privée

Salle de bain

Armoires encastrées

Barbecue

Salle de sport

Restaurant sur place

Paddle tennis

Sauna

### Vues

Mer

Montagne

Panoramique

### Cuisine

Entièrement équipée

### Parking

Souterrain

### Orientation

Sud

Sud-Est

Sud-ouest

### Paramètre

Proche des magasins

### Jardin

Communautaire

Aménagé

### Catégorie

Luxe

Nouveau développement

### Contrôle du climat

Cold A / C

A / C chaud

Chauffage U / F

### Piscine

Communautaire

### Sécurité

Sécurité 24 heures

Stores électriques