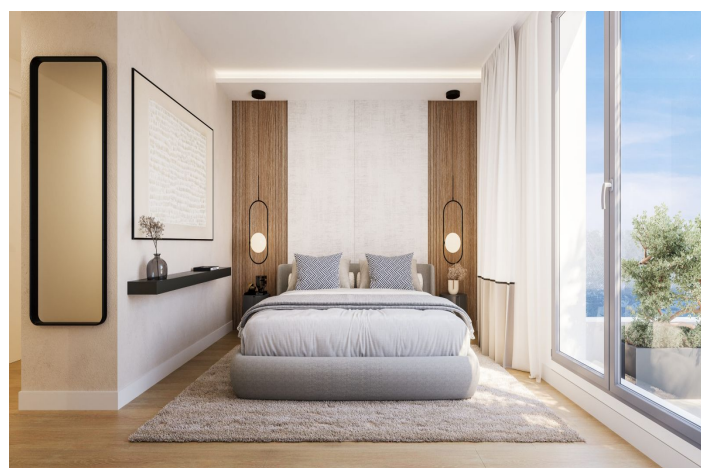
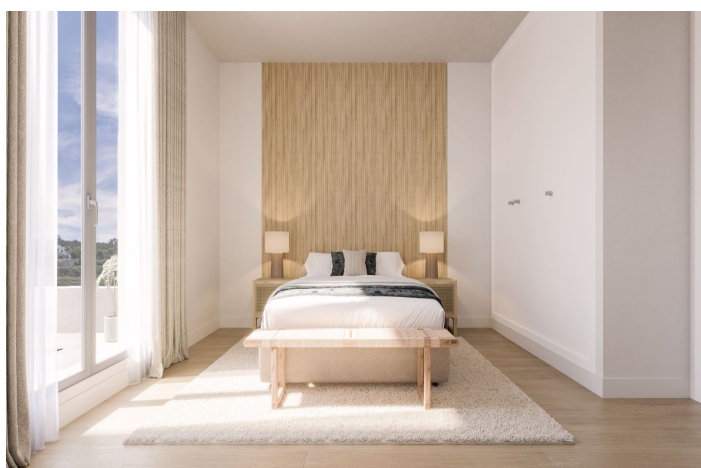


Appartement au rez-de-chaussée à vendre à Manilva

289 010 - 487 092 €

Référence: R4794697 Chambres: 2 - 3 Bain: 2 Construite: 102m² - 132m² Terrasse: 19m² - 107m²





Costa del Sol, Manilva

Imagine waking up each morning to a setting where tranquility blends with the sea breeze and the warm Mediterranean sun. This and much more is what our development of 45 exclusive new-build apartments in Manilva offers you.

A complex that offers serenity and comfort in its three elegant buildings. Can you imagine enjoying a spacious ground floor apartment with a garden, or perhaps you prefer the height and stunning views from our duplex penthouses? With 2 or 3 bedroom options, each of our apartments offers a living space that adapts to your needs, with sizes ranging from cozy 102 m² to luxurious 132 m².

Its southwest orientation allows you to enjoy wonderful panoramic views of the sea, Gibraltar and North Africa from your terrace. In addition, natural light will flood every corner of your living room.

The purchase includes not only a home, but also comfort and security. You will have your own parking space and storage room to store your treasures and keep your space impeccably organized. Enjoy the community pool where you can dive in and relax, a modern gym to keep your body fit, a versatile multipurpose room for your events or meetings and a children's area where the little ones can let their imaginations run wild.

With its privileged location, you will have access to a wide range of services in the charming surroundings of Casares Costa, El Cortesín, Manilva pueblo and Sotogrande. And for lovers of golf, beaches and outdoor adventure, you will be surrounded by the best golf clubs and courses in the area, magnificent beaches and coves, and mountains that offer endless activities to explore and enjoy.

Don't wait any longer to make your dream come true. Contact us today and reserve your favorite option and we will help you in every way possible towards your new home by the sea in Manilva.



Spécification:

Caractéristiques

Terrasse privée

Pièce de stockage

Salle de bain

Double vitrage

Armoires encastrées

Fibre optique

Salle de sport

Solarium

Vues

Mer

Panoramique

Jardin

Jardin

Communautaire

Aménagé

Catégorie

Nouveau développement

Orientation

Sud-ouest

Condition

Nouvelle construction

Sécurité

Complexe fermé

Téléphone d'entrée

Contrôle du climat

A / C pré-installé

Piscine

Communautaire

Parking

Souterrain

Communautaire