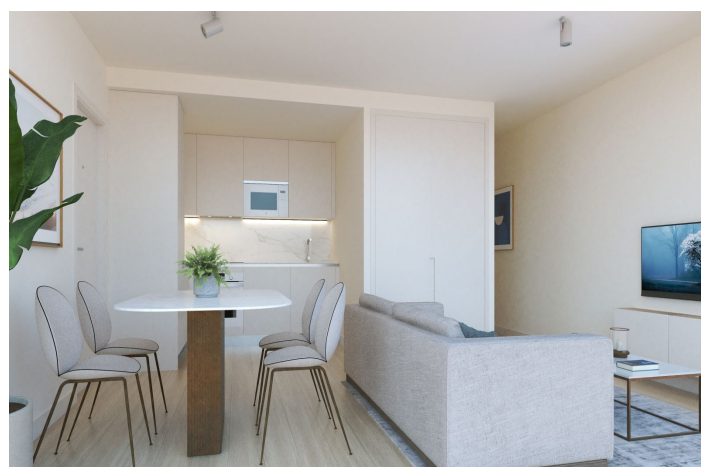


Wohnung im Erdgeschoss zum Verkauf in Fuengirola

249.000 - 259.000 €

Referenz: R4433299 Schlafzimmer: 1 - 2 Badezimmer: 1 Garten: 46m²





Costa del Sol, Fuengirola

This new development, a unique, modern and exclusive project located on the second line of the beach and in the heart of Fuengirola! Unmatched for the elegance of its design, the qualities of its materials and the care of all the details. Full bathroom with its sink cabinet with LED light mirror and screens. Bright open concept living room that is integrated with a magnificent kitchen with a modern and current design provided with high and low furniture and with all its top brand appliances. The apartments have pre-installation of air conditioning through ducts, high quality parquet floors, climalit type exterior carpentry, top quality porcelain tiles in bathrooms, reinforced doors, built-in wardrobes lined inside, recessed light bulbs in the living area. false ceiling (bathrooms, kitchens and hallways). All with high quality materials. Central location offers you all services within 3 minutes: such as supermarkets, medical centers, schools, library, leisure area and restaurants. The Renfe Cercanías train station and Bus are about 7 minutes away on foot, so you will not need to take the car for your daily life, although undoubtedly the best of all is having the beach just a minute walking. It should be noted that it is very close to the entertainment area where the restaurants and bars are nearby, the street where the building is located is very quiet and there is no noise or hustle and bustle. Contact us and find out about the conditions .

Note: The images are not contractual and are merely illustrative of the decoration possibilities that may be modified due to technical, legal or commercial requirements of the project management or competent authority. The furniture in the interior infographics is not included in the sale price (except for those in the kitchen and bathrooms)



Eigenschaften:

Merkmale

Aufzug

In der Nähe des Transports

Private Terrasse

Doppelverglasung

Einbauschränke

Glasfaser

Access for people with reduced mobility

In der Nähe der Kirche

Einstellung

Strand

In der Nähe des Hafens

In der Nähe des Meeres

In der Nähe von Geschäften

In der Nähe von Schulen

Stadt

In der Nähe von Marina

Küche

Voll Ausgerüstet

Klimakontrolle

A/C Vorinstallierte

Ansichten

Straße

Zustand

Neubau

Möbel

Nicht eingerichtet

Sicherheit

Elektrische Jalousien

Eingabetelefon

Versorgungsunternehmen

Elektrizität

Trinkwasser

Photovoltaik -Sonnenkollektoren

Telefon

Kategorie

Investition

Neue Entwicklung