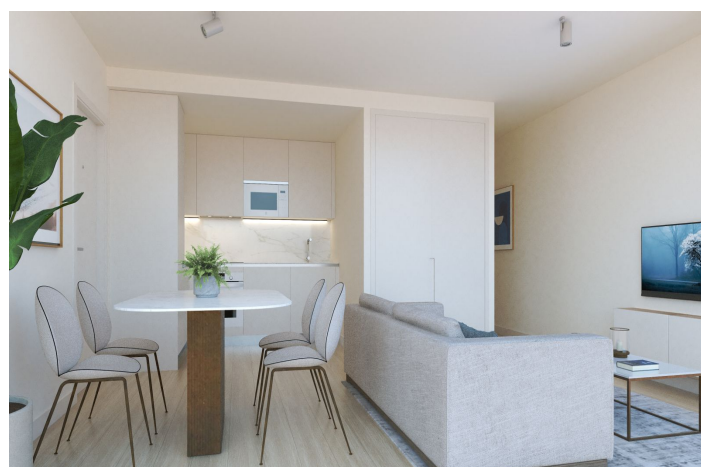


# Appartement op de begane grond te koop in Fuengirola 249.000 - 259.000 €

Referentie: R4433299 Slaapkamers: 1 - 2 Badkamers: 1 Perceelgrootte: 46m<sup>2</sup>





## Costa del Sol, Fuengirola

This new development, a unique, modern and exclusive project located on the second line of the beach and in the heart of Fuengirola! Unmatched for the elegance of its design, the qualities of its materials and the care of all the details. Full bathroom with its sink cabinet with LED light mirror and screens. Bright open concept living room that is integrated with a magnificent kitchen with a modern and current design provided with high and low furniture and with all its top brand appliances. The apartments have pre-installation of air conditioning through ducts, high quality parquet floors, climalit type exterior carpentry, top quality porcelain tiles in bathrooms, reinforced doors, built-in wardrobes lined inside, recessed light bulbs in the living area. false ceiling (bathrooms, kitchens and hallways). All with high quality materials. Central location offers you all services within 3 minutes: such as supermarkets, medical centers, schools, library, leisure area and restaurants. The Renfe Cercanías train station and Bus are about 7 minutes away on foot, so you will not need to take the car for your daily life, although undoubtedly the best of all is having the beach just a minute walking. It should be noted that it is very close to the entertainment area where the restaurants and bars are nearby, the street where the building is located is very quiet and there is no noise or hustle and bustle. Contact us and find out about the conditions .

Note: The images are not contractual and are merely illustrative of the decoration possibilities that may be modified due to technical, legal or commercial requirements of the project management or competent authority. The furniture in the interior infographics is not included in the sale price (except for those in the kitchen and bathrooms)



## Kenmerken:

### Kenmerken

Tillen  
Nabij transport  
Privéterras  
Dubbel glas  
Op maat gemaakte kledingkasten  
Glasvezel  
Toegang voor mensen met  
verminderde mobiliteit  
Nabij de kerk

### Instelling

Strand  
Dicht bij de poort  
Dicht bij zee  
Dicht bij winkels  
Dicht bij scholen  
Dorp  
Dicht bij jachthaven

### Keuken

Geheel op maat gemaakt

### Categorie

Investering  
Nieuwe ontwikkeling

### Klimaatcontrole

Vooraf geïnstalleerd a/c

### Voorwaarde

Nieuwe constructie

### Beveiliging

Elektrische jaloezieën  
Invoertelefoon

### Keer bekeken

Straat

### Meubilair

Niet ingericht

### Nutsvoorzieningen

Elektriciteit  
Drinkbaar water  
Fotovoltaïsche zonnepanelen  
Telefoon