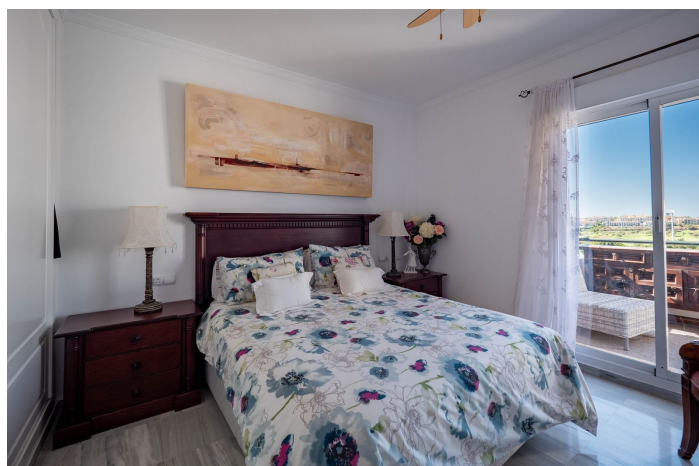


Penthouse for sale in Alhaurín el Grande

365,000 €

Reference: R4839883 Bedrooms: 3 Bathrooms: 2 Build Size: 126m² Terrace: 32m²





Malaga Inland, Alhaurín el Grande

This well-presented Duplex Penthouse with lift access is located in the famous Alhaurin Golf Complex, within walking distance of bars and restaurants. The first level comprises a hallway, an open lounge/dining area enjoying golf views and direct access to two terraces, an ensuite master bedroom with an ensuite bathroom with fitted wardrobes (access to a terrace), and a recently installed modern kitchen with all the mod cons.

From the hallway, a staircase leads up to two more bedrooms, a family bathroom, a landing with fitted wardrobes, and access to a private terrace with amazing views.

The property features marble floors, hot and cold air conditioning, double glazing, fitted wardrobes, allocated covered parking, a storage room, a communal swimming pool, and a clubhouse with a restaurant.

This is an excellent investment opportunity with the potential to generate extra income from a robust rental market in both short and long-term lets. Access to the coast/beach takes about 20 minutes, and the airport takes 30 minutes. The popular Pueblos of Coin and Alhaurin El Grande are within a 10-minute drive.

Penthouse Duplex, Alhaurin Golf, Costa del Sol.

3 Bedrooms, 2 Bathrooms, Built 126 m².

Setting : Close To Golf, Urbanisation.

Condition : Excellent.

Pool : Communal.

Climate Control : Air Conditioning, Hot A/C, Cold A/C.

Views : Mountain, Golf, Country, Panoramic.

Features : Lift, Fitted Wardrobes, Near Transport, Private Terrace, Storage Room, Ensuite Bathroom, Marble Flooring, Double Glazing, Restaurant On Site.

Furniture : Optional.

Kitchen : Fully Fitted.

Garden : Communal.

Security : Entry Phone.

Parking : Covered.

Utilities : Electricity, Drinkable Water.

Category : Resale.



Features:

Features

Lift
Near Transport
Private Terrace
Storage Room
Ensuite Bathroom
Marble Flooring
Double Glazing
Fitted Wardrobes
Restaurant On Site

Setting

Close To Golf
Urbanisation

Furniture

Optional

Security

Entry Phone

Category

Resale

Climate Control

Air Conditioning
Cold A/C
Hot A/C

Condition

Excellent

Kitchen

Fully Fitted

Parking

Covered

Views

Mountain
Panoramic
Country
Golf

Pool

Communal

Garden

Communal

Utilities

Electricity
Drinkable Water