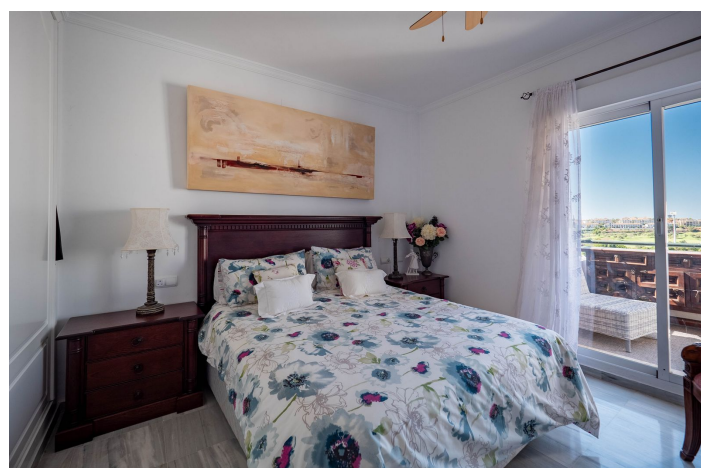
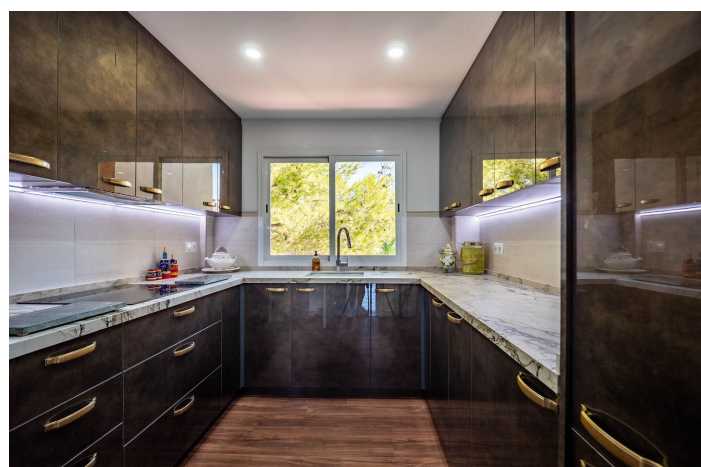


Duplex penthouse à vendre à Alhaurín el Grande

365 000 €

Référence: R4839883 Chambres: 3 Bain: 2 Construite: 126m² Terrasse: 32m²





Malaga Inland, Alhaurín el Grande

This well-presented Duplex Penthouse with lift access is located in the famous Alhaurin Golf Complex, within walking distance of bars and restaurants. The first level comprises a hallway, an open lounge/dining area enjoying golf views and direct access to two terraces, an ensuite master bedroom with an ensuite bathroom with fitted wardrobes (access to a terrace), and a recently installed modern kitchen with all the mod cons.

From the hallway, a staircase leads up to two more bedrooms, a family bathroom, a landing with fitted wardrobes, and access to a private terrace with amazing views.

The property features marble floors, hot and cold air conditioning, double glazing, fitted wardrobes, allocated covered parking, a storage room, a communal swimming pool, and a clubhouse with a restaurant.

This is an excellent investment opportunity with the potential to generate extra income from a robust rental market in both short and long-term lets. Access to the coast/beach takes about 20 minutes, and the airport takes 30 minutes. The popular Pueblos of Coin and Alhaurin El Grande are within a 10-minute drive.

Penthouse Duplex, Alhaurin Golf, Costa del Sol.

3 Bedrooms, 2 Bathrooms, Built 126 m².

Setting : Close To Golf, Urbanisation.

Condition : Excellent.

Pool : Communal.

Climate Control : Air Conditioning, Hot A/C, Cold A/C.

Views : Mountain, Golf, Country, Panoramic.

Features : Lift, Fitted Wardrobes, Near Transport, Private Terrace, Storage Room, Ensuite Bathroom, Marble Flooring, Double Glazing, Restaurant On Site.

Furniture : Optional.

Kitchen : Fully Fitted.

Garden : Communal.

Security : Entry Phone.

Parking : Covered.

Utilities : Electricity, Drinkable Water.

Category : Resale.



Spécification:

Caractéristiques

Ascenseur
Près du transport
Terrasse privée
Pièce de stockage
Salle de bain
Sol en marbre
Double vitrage
Armoires encastrées
Restaurant sur place

Paramètre

Près du golf
Urbanisation

Meubles

Optional

Sécurité

Téléphone d'entrée

Catégorie

Revente

Contrôle du climat

Climatisation
Cold A / C
A / C chaud

Condition

Excellent

Cuisine

Entièrement équipée

Parking

Covered

Vues

Montagne
Panoramique
Pays
Le golf

Piscine

Communautaire

Jardin

Communautaire

Services publics

Électricité
Eau potable