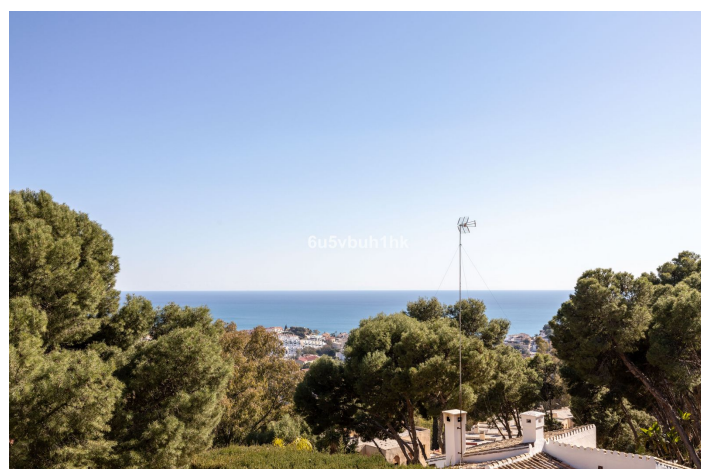
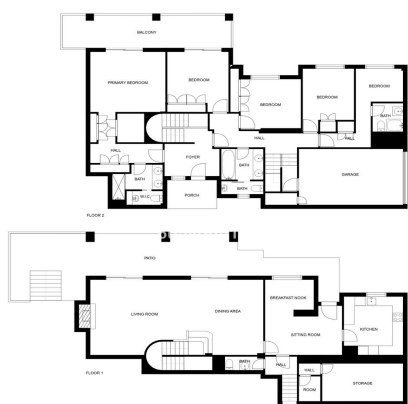


# Abstandsvilla zum Verkauf in Málaga

1.650.000 €

Referenz: R4847992 Schlafzimmer: 5 Badezimmer: 4 Grundstücksgröße: 1.028m<sup>2</sup> Garten: 350m<sup>2</sup>



Strand Properties® MEASUREMENTS ARE CALCULATED BY CUBICASA TECHNOLOGY. DEEMED HIGHLY RELIABLE BUT NOT GUARANTEED.





## Costa del Sol, Málaga

Located in one of the most privileged areas East of Malaga - Cerrado de Calderon, this magnificent villa sits on a large plot of 1.028m<sup>2</sup> with south orientation. The property spreads across two floors with a total of 350m<sup>2</sup>. The upper floor includes five bedrooms all facing south, spacious built in-wardrobes and three bathrooms of which two are en-suites. The master bedroom with its en-suite, has a cosy feel with lots of natural light and provides direct access to a spacious terrace from which views over the Mediterranean can be enjoyed. This spacious terrace is also accessible from another bedroom. As we walk down the main stairs, we find ourselves on the lower floor which features a large open living and formal dining area, a light filled kitchen, informal breakfast room and a guest bathroom. The open space living and formal dining room includes a beautiful chimney and access to a lovely porch, green garden and private swimming pool. Located in a quite street with only seven neighbours and being a cul-de-sac, it offers little to no traffic. The property also includes a garage and a private driveway that can accommodate another two vehicles. In the area and close to the property you will find three of the most recognised schools in Malaga, including British school and Lycée Frances and a local school with a Spanish curriculum. Cerrado de Calderón is one of the most privileged residential areas in Malaga. It offers lots of beautiful green areas, two local shopping centres with supermarkets and well known restaurants. From here you also have quick access to the freeway ensuring that you are within easy reach of the airport and the beaches on the Costa del Sol .



## Eigenschaften:

### Merkmale

Überdachte Terrasse

In der Nähe des Transports

Private Terrasse

Lagerraum

Einbauschränke

Allzweckraum

### Einstellung

In der Nähe von Schulen

### Klimakontrolle

Klimaanlage

### Schwimmbad

Privat

### Ansichten

Panorama

Garden

Schwimmbad