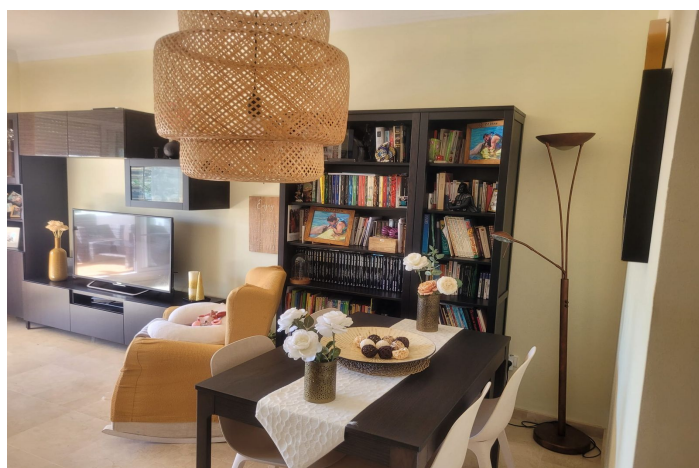


Apartment mit mittlerer Etage zum Verkauf in Benalmádena

320.000 €

Referenz: R4849801 Schlafzimmer: 2 Badezimmer: 2 Garten: 96m² Terrasse: 15m²





Costa del Sol, Benalmádena

Bright 2-Bedroom Apartment in Torrequebrada, Benalmádena

Located in the sought-after Arenal Golf residential complex, this well-maintained 2-bedroom, 2-bathroom apartment offers a comfortable living experience. The apartment benefits from a dual east-west orientation, allowing plenty of natural light to fill the living room and terrace in the morning, and the kitchen in the afternoon.

The property is move-in ready and features a spacious terrace, a large storage room, and two parking spaces. The building also includes an elevator, and the interior of the apartment is adapted for those with reduced mobility.

Key Features:

- 96 m² built area
- 2 bedrooms, 2 bathrooms
- Private terrace
- Central heating and air conditioning
- Fitted wardrobes
- Large storage room
- Two parking spaces

Community Amenities:

- Two swimming pools
- Two padel courts
- Children's playground
- Large communal areas

Conveniently located near golf courses, shops, restaurants, and within walking distance of both a private and public hospital, pharmacies, and schools. Ideal for those seeking a tranquil yet accessible lifestyle in one of the best residential areas of Benalmádena.

For more information or to schedule a viewing, please contact me.



Eigenschaften:

Merkmale

Überdachte Terrasse
Aufzug
In der Nähe des Transports
Private Terrasse
Lagerraum
Einbauschränke
W-lan
Paddeltennis

Ansichten

Panorama
Land
Garden

Schwimmbad

Gemeinschaft

Garten

Gemeinschaft

Versorgungsunternehmen

Elektrizität
Trinkwasser

CO2 -Emissionsbewertung

D

Orientierung

Ost
West

Einstellung

In der Nähe von Golf
In der Nähe von Geschäften

Möbel

Teil eingerichtet

Sicherheit

Eingabetelefon

Kategorie

Ferienwohnungen
Investition
Wiederverkauf
Golf

Klimakontrolle

Klimaanlage
Kalte a/c
Heiße A/C.

Zustand

Gut
Exzellent

Küche

Voll Ausgerüstet

Parken

Unter Tage
Private
Mehr als eine

Energiebewertung

D