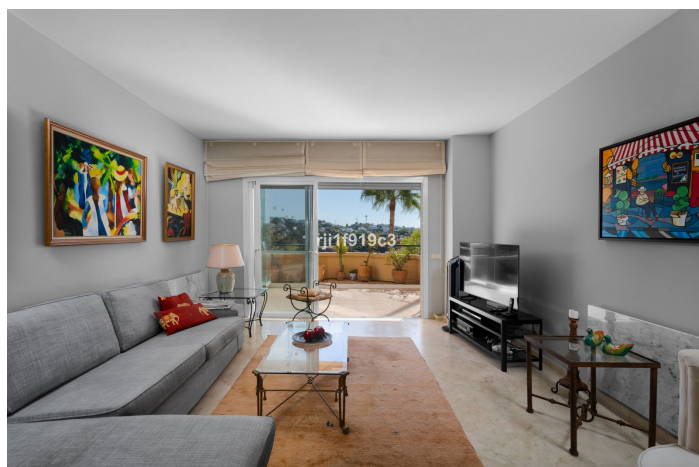


Appartement au rez-de-chaussée à vendre à Marbella

695 000 €

Référence: R4829848 Chambres: 3 Bain: 3 Construite: 150m² Terrasse: 55m²





Costa del Sol, Elviria

****Raised ground floor apartment for Sale in Elviria, Marbella****

Discover your dream home in the heart of Elviria, Marbella! This stunning raised ground floor apartment boasts 150 m² of beautifully designed living space, complemented by a generous 55 m² terrace, which has been partially enclosed with glass curtains, making it possible to enjoy it all year round.

With 3 spacious bedrooms and 3 modern bathrooms, this property offers comfort and luxury in every corner. Enjoy the convenience of a fully fitted kitchen, air conditioning, and central heating. The marble floors add a touch of elegance, while the underfloor heating in the bathrooms ensures a cozy atmosphere.

The apartment is perfectly oriented to the south/east, providing ample natural light throughout the day. Step outside to the communal garden, take a dip in the swimming pool, or stay active in the on-site gym and tennis court. The communal garage includes one parking space, ensuring your vehicle is always secure. The apartment is sold without furniture.

Located near amenities, transport, and just a short distance from the sea/beach, this property offers unparalleled convenience. Enjoy breathtaking views of the sea, golf course, and even a serene lake. The apartment is also close to shops, town, port, and schools, making it an ideal location for families. The development features a 9-hole par 3 golf course and an on-site restaurant, Restaurante El Lago.

Additional features include double glazing, security shutters, a private terrace, dining room, living room, laundry room, fitted wardrobes, lift access, alarm system, and glass doors. Built in 2000 and maintained in excellent condition, this apartment is ready for you to move in and start living your best life in Marbella. Don't miss this incredible opportunity!



Spécification:

Caractéristiques

Terrasse couverte

Ascenseur

Près du transport

Terrasse privée

Sol en marbre

Double vitrage

Armoires encastrées

Buanderie

Salle de sport

Court de tennis

Vues

Mer

Montagne

Jardin

Piscine

Lac

Le golf

Piscine

Communautaire

Sécurité

Système d'alarme

Orientation

Sud-Est

Paramètre

Près de la mer

Proche des magasins

Près des écoles

Cuisine

Entièrement équipée

Parking

Communautaire

Contrôle du climat

Climatisation

Chauffage central

Salles de bain U / F / H

Condition

Bien

Jardin

Communautaire

Catégorie

Luxe