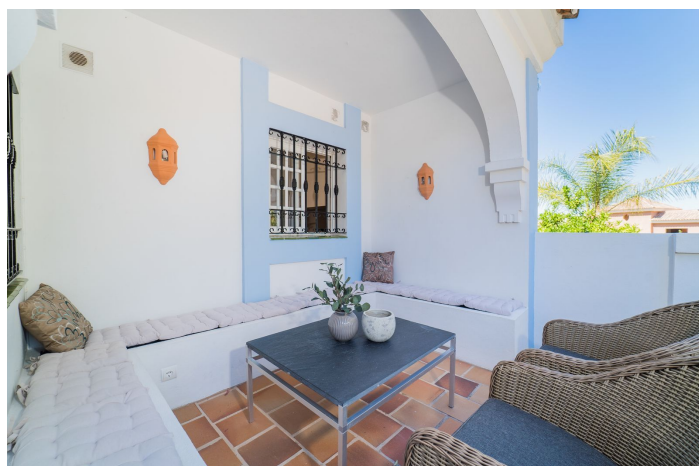


Apartment mit mittlerer Etage zum Verkauf in Marbella

349.000 €

Referenz: R4836907 Schlafzimmer: 1 Badezimmer: 1 Garten: 85m² Terrasse: 85m²





Costa del Sol, Nueva Andalucía

Large roof terrace with panoramic view!

The apartment has a very nice open floor plan between the kitchen and living room. It has a master bedroom and the possibility of two pull-out single beds in the living room. There is a bathroom with a bathtub and a washing machine. High modern standard.

It also has two private terraces. A smaller one on the lower floor with a roof and a large roof terrace with space for both a lounge and a dining area for larger groups. The roof terrace has a retractable shade cover that covers almost the entire terrace, which allows you to use the roof terrace as a living room during the day and in the evening can be used under the open sky.

The charming residential area was built in 1985 as a typical Andalusian of built up on several levels around a central square. It is picturesque, colorful and beautiful.

You can find both apartments and townhouses in the village as well as several small cafes, bars, restaurants and even a bank and a beauty salon. All this contributes to creating the cozy atmosphere.

Shops, golf, restaurants - close to all amenities

The residential area also has a well-maintained communal pool, close to this apartment, with stunning mountain views. Within walking distance of Aloha Pueblo are several other facilities such as grocery stores, hair salons and several excellent restaurants. Aloha Pueblo is also close to the vibrant residential area of Aloha Gardens which has a fantastic selection of cafes, international restaurants and bars.

For golfers, Aloha Pueblo is located in the middle of the Golf Valley and has several world-class golf courses nearby.



Eigenschaften:

Merkmale

In der Nähe des Transports

Private Terrasse

Einbauschränke

W-lan

Paddeltennis

Ansichten

Berg

Panorama

Forest

Golf

Schwimmbad

Gemeinschaft

Garten

Gemeinschaft

Kategorie

Investition

Wiederverkauf

Golf

Orientierung

Südwesten

Nordosten

Einstellung

In der Nähe von Golf

In der Nähe des Hafens

Siedlung

In der Nähe des Meeres

In der Nähe von Geschäften

In der Nähe der Stadt

In der Nähe von Schulen

In der Nähe des Waldes

In der Nähe von Marina

Möbel

Voll möbliert

Parken

Privat

Street

Klimakontrolle

Klimaanlage

Zentralheizung

Zustand

Gut

Küche

Voll Ausgerüstet

Versorgungsunternehmen

Elektrizität