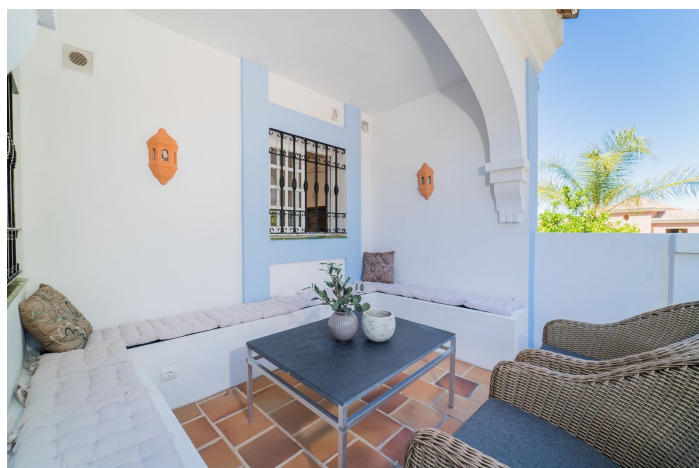


Appartement au milieu à vendre à Marbella

349 000 €

Référence: R4836907 Chambres: 1 Bain: 1 Construite: 85m² Terrasse: 85m²





Costa del Sol, Nueva Andalucía

Large roof terrace with panoramic view!

The apartment has a very nice open floor plan between the kitchen and living room. It has a master bedroom and the possibility of two pull-out single beds in the living room. There is a bathroom with a bathtub and a washing machine. High modern standard.

It also has two private terraces. A smaller one on the lower floor with a roof and a large roof terrace with space for both a lounge and a dining area for larger groups. The roof terrace has a retractable shade cover that covers almost the entire terrace, which allows you to use the roof terrace as a living room during the day and in the evening can be used under the open sky.

The charming residential area was built in 1985 as a typical Andalusian of built up on several levels around a central square. It is picturesque, colorful and beautiful.

You can find both apartments and townhouses in the village as well as several small cafes, bars, restaurants and even a bank and a beauty salon. All this contributes to creating the cozy atmosphere.

Shops, golf, restaurants - close to all amenities

The residential area also has a well-maintained communal pool, close to this apartment, with stunning mountain views. Within walking distance of Aloha Pueblo are several other facilities such as grocery stores, hair salons and several excellent restaurants. Aloha Pueblo is also close to the vibrant residential area of Aloha Gardens which has a fantastic selection of cafes, international restaurants and bars.

For golfers, Aloha Pueblo is located in the middle of the Golf Valley and has several world-class golf courses nearby.



Spécification:

Caractéristiques

Près du transport
Terrasse privée
Armoires encastrées
Wifi
Paddle tennis

Vues

Montagne
Panoramique
Forêt
Le golf

Piscine

Communautaire

Jardin

Communautaire

Catégorie

Investissement
Revente
Le golf

Orientation

Sud-ouest
Nord-Est

Paramètre

Près du golf
Près du port
Urbanisation
Près de la mer
Proche des magasins
Près de la ville
Près des écoles
Près de la forêt
Près de Marina

Meubles

Entièrement meublé

Parking

Private
Rue

Contrôle du climat

Climatisation
Chauffage central

Condition

Bien

Cuisine

Entièrement équipée

Services publics

Électricité