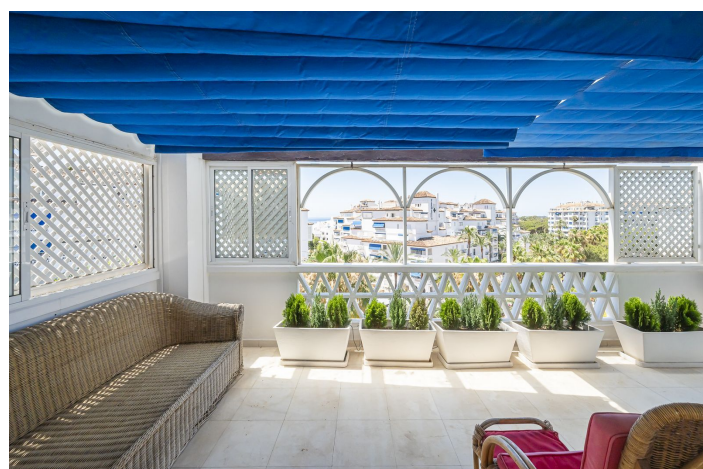


Atico dúplex en venta en Marbella

1.997.000 €

Referencia: R4568056 Dormitorios: 5 Baños: 3 Construido: 280m² Terraza: 60m²





Costa del Sol, Puerto Banús

EXCLUSIVE LISTING!!

Discover luxury and comfort in this spectacular corner duplex penthouse located in the prestigious Playas del Duque development, Edificio Gaviotas, in Puerto Banus! This magnificent property of 280 m² offers five spacious bedrooms and three complete bathrooms, distributed over two floors, designed to satisfy all your needs. The main floor will captivate you with its spacious kitchen with a central island and access to a glazed terrace perfect for enjoying meals in an open and bright environment.

The large L-shaped living and dining room connects to another fabulous terrace with partial views of the sea, the lush gardens and the refreshing swimming pools of the urbanization, offering you an ideal space to relax and enjoy the outdoors. This floor also includes three comfortable bedrooms and two bathrooms, providing more than enough space for the whole family.

On the first floor you will find two additional large bedrooms and a luxurious shared bathroom, as well as a dressing room that offers ample storage space. The property includes a large garage space and a 30 m² storage room, providing you with additional convenience and organisation. Enjoy the tranquillity and security offered by the development with 24-hour concierge and security.

This duplex is surrounded by essential services within walking distance, such as pharmacies, gyms, supermarkets, restaurants and luxury shops, including El Corte Inglés. The proximity to the beach makes this property a perfect choice for both family holidays and an excellent investment. Don't miss this unique opportunity and come and see your next home in Puerto Banus, we are waiting for you!



Características:

Características

Terraza
Elevar
Transporte cercano
Terraza
Televisión satelital
Trastero
Baño privado
Doble acristalamiento
Armarios empotrados
Wifi
Lavadero

Configuración

Área comercial
Junto a la playa
Cerca del puerto
Urbanización
Cerca del mar
Cerca de las tiendas
Cerca de la ciudad
Cerca de las escuelas
Cerca del bosque
Ciudad
Cerca de Marina

Muebles

Sin Amueblar

Seguridad

Complejo cerrado
Seguridad de 24 horas
Teléfono de entrada

Orientación

Este
Sur
Oeste

Condición

Good

Cocina

Fully Fitted

Estacionamiento

Cochera

Control climatico

Aire acondicionado
Fría de aire acondicionado
A/C caliente

Piscina

Comunal

Jardín

Comunal