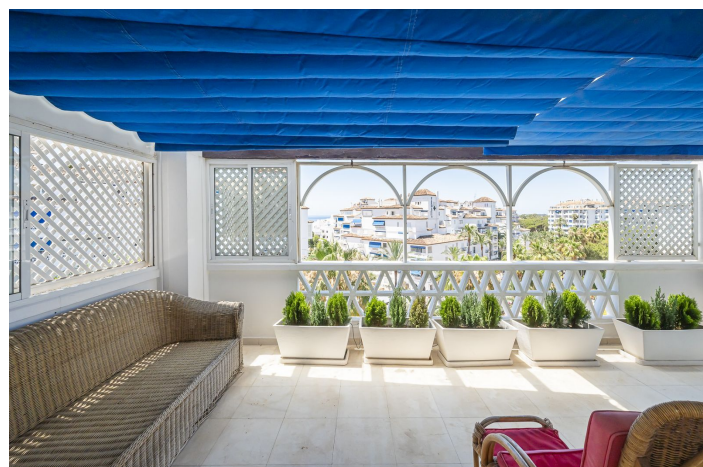


## Duplex penthouse à vendre à Marbella

1 997 000 €

Référence: R4568056    Chambres: 5    Bain: 3    Construite: 280m<sup>2</sup>    Terrasse: 60m<sup>2</sup>





## Costa del Sol, Puerto Banús

### EXCLUSIVE LISTING!!

Discover luxury and comfort in this spectacular corner duplex penthouse located in the prestigious Playas del Duque development, Edificio Gaviotas, in Puerto Banus! This magnificent property of 280 m<sup>2</sup> offers five spacious bedrooms and three complete bathrooms, distributed over two floors, designed to satisfy all your needs. The main floor will captivate you with its spacious kitchen with a central island and access to a glazed terrace perfect for enjoying meals in an open and bright environment.

The large L-shaped living and dining room connects to another fabulous terrace with partial views of the sea, the lush gardens and the refreshing swimming pools of the urbanization, offering you an ideal space to relax and enjoy the outdoors. This floor also includes three comfortable bedrooms and two bathrooms, providing more than enough space for the whole family.

On the first floor you will find two additional large bedrooms and a luxurious shared bathroom, as well as a dressing room that offers ample storage space. The property includes a large garage space and a 30 m<sup>2</sup> storage room, providing you with additional convenience and organisation. Enjoy the tranquillity and security offered by the development with 24-hour concierge and security.

This duplex is surrounded by essential services within walking distance, such as pharmacies, gyms, supermarkets, restaurants and luxury shops, including El Corte Inglés. The proximity to the beach makes this property a perfect choice for both family holidays and an excellent investment. Don't miss this unique opportunity and come and see your next home in Puerto Banus, we are waiting for you!



## Spécification:

### Caractéristiques

Terrasse couverte  
Ascenseur  
Près du transport  
Terrasse privée  
Télévision par satellite  
Pièce de stockage  
Salle de bain  
Double vitrage  
Armoires encastrées  
Wifi

### Buanderie

### Paramètre

Zone commerciale  
En bord de mer  
Près du port  
Urbanisation  
Près de la mer  
Proche des magasins  
Près de la ville  
Près des écoles  
Près de la forêt  
Ville  
Près de Marina

### Meubles

Non meublé

### Sécurité

Complexe fermé  
Sécurité 24 heures  
Téléphone d'entrée

### Orientation

Est  
Sud  
Ouest

### Condition

Bien

### Cuisine

Entièrement équipée

### Parking

Garage

### Contrôle du climat

Climatisation  
Cold A / C  
A / C chaud

### Piscine

Communautaire

### Jardin

Communautaire