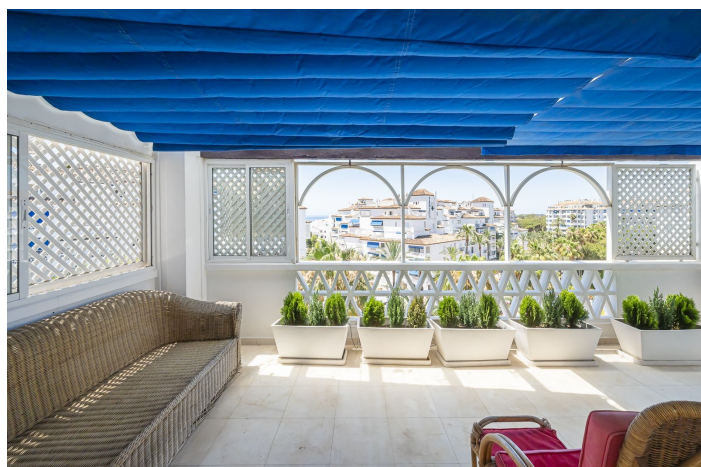


Penthouse duplex te koop in Marbella

1.997.000 €

Referentie: R4568056 Slaapkamers: 5 Badkamers: 3 Perceelgrootte: 280m² Terras: 60m²





Costa del Sol, Puerto Banús

EXCLUSIVE LISTING!!

Discover luxury and comfort in this spectacular corner duplex penthouse located in the prestigious Playas del Duque development, Edificio Gaviotas, in Puerto Banus! This magnificent property of 280 m² offers five spacious bedrooms and three complete bathrooms, distributed over two floors, designed to satisfy all your needs. The main floor will captivate you with its spacious kitchen with a central island and access to a glazed terrace perfect for enjoying meals in an open and bright environment.

The large L-shaped living and dining room connects to another fabulous terrace with partial views of the sea, the lush gardens and the refreshing swimming pools of the urbanization, offering you an ideal space to relax and enjoy the outdoors. This floor also includes three comfortable bedrooms and two bathrooms, providing more than enough space for the whole family.

On the first floor you will find two additional large bedrooms and a luxurious shared bathroom, as well as a dressing room that offers ample storage space. The property includes a large garage space and a 30 m² storage room, providing you with additional convenience and organisation. Enjoy the tranquillity and security offered by the development with 24-hour concierge and security.

This duplex is surrounded by essential services within walking distance, such as pharmacies, gyms, supermarkets, restaurants and luxury shops, including El Corte Inglés. The proximity to the beach makes this property a perfect choice for both family holidays and an excellent investment. Don't miss this unique opportunity and come and see your next home in Puerto Banus, we are waiting for you!



Kenmerken:

Kenmerken

Overdekt terras

Tillen

Nabij transport

Privéterras

Satelliet TV

Opslagruimte

Ensuite badkamer

Dubbel glas

Op maat gemaakte kledingkasten

Wifi

Bijkeuken

Instelling

Winkel gebied

Strand

Dicht bij de poort

Verstedelijking

Dicht bij zee

Dicht bij winkels

Dicht bij de stad

Dicht bij scholen

Dicht bij bos

Dorp

Dicht bij jachthaven

Meubilair

Niet ingericht

Beveiliging

Gated Complex

24 -uurs beveiliging

Invoertelefoon

Oriëntatie

Oosten

zuiden

West

Voorwaarde

Goed

Keuken

Geheel op maat gemaakt

Parkeergelegenheid

Garage

Klimaatcontrole

Airconditioning

Koud A/C

Hete a/c

Pool

Gemeenschappelijk

Tuin

Gemeenschappelijk