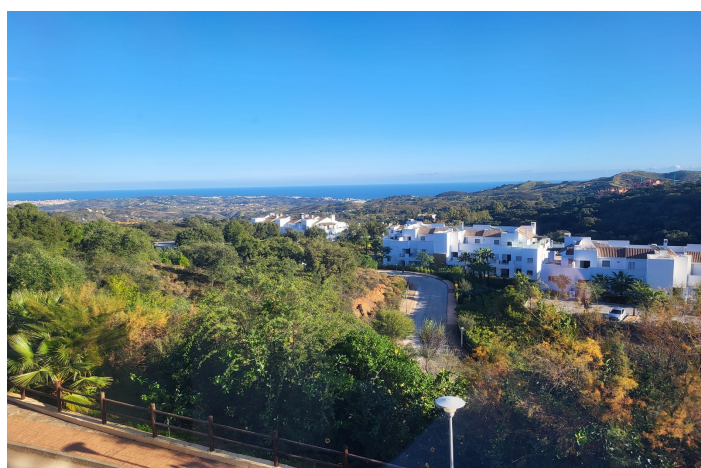
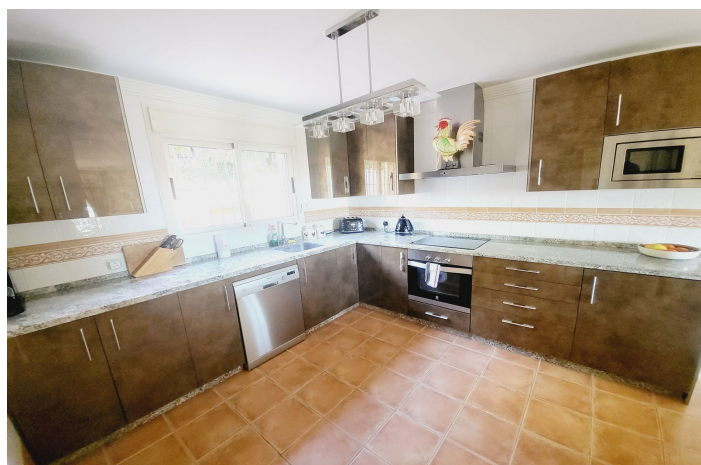


Stadthaus zum Verkauf in Marbella

495.000 €

Referenz: R4217206 Schlafzimmer: 4 Garten: 199m² Terrasse: 34m²





Costa del Sol, La Mairena

SUPERB CORNER TOWNHOUSE SITUATED IN THE MUCH SOUGHT AFTER EL VICARIO COMPLEX WHICH IS NESTLED IN THE STUNNING LA MAIRENA DEVELOPMENT IN THE OJEN COUNTRYSIDE. ENJOYING FANTASTIC PANORAMIC VIEWS FROM THE IDYLIC LOCATION, THIS LUXURY PROPERTY IS ONLY A SHORT 10 MINUTE DRIVE TO EITHER ELVIRIA OR LA CALA DE MIJAS WITH THEIR WIDE RANGE OF AMENITIES AND STUNNING BEACHES.

THE ACCOMMODATION IS EXTREMELY LIGHT AND SPACIOUS WITH A DISTRIBUTION OVER THREE LEVELS AS FOLLOWS:

LOWER FLOOR - DOUBLE GARAGE SPACE, STORAGE ROOM, SECURE ENTRANCE LEADING TO 4TH DOUBLE GUEST BEDROOM AND SEPARATE GUEST BATHROOM/UTILITY. STAIRS LEADING TO:

GROUND FLOOR - HUGE OPEN PLAN LOUNGE / DINING / LUXURY FITTED KITCHEN AND SEPARATE GUEST CLOAKROOM. MAIN ENTRANCE LEADING TO REAR/SIDE PATIO AND GIVING ACCESS TO THE COMMUNAL POOL AND GARDENS. DOUBLE PATIO DOORS LEAD TO A LARGE SUNNY TERRACE WITH ROOM TO BOTH DINE AND RELAX WHILST ENJOYING THE INCREDIBLE VIEWS. THE TERRACE HAS GLASS CURTAINS TO ALLOW ALL ROUND ENJOYMENT OF THIS GREAT SPACE. STAIRS LEADING TO:

UPPER FLOOR - TWO GENEROUS DOUBLE GUEST BEDROOMS SHARING A GUEST BATHROOM WITH WALK-IN SHOWER, MASTER SUITE WITH FEATURE WALK-IN DRESSING ROOM AND ENSUITE BATHROOM WITH BOTH A BATH AND WALK-IN SHOWER. THE MASTER SUITE HAS A PRIVATE TERRACE WHICH HAS GLASS CURTAINS AND INCREDIBLE VIEWS DOWN TO THE COAST.

FINISHED TO THE HIGHEST STANDARDS OF QUALITY WITH MARBLE FITTINGS THROUGHOUT, AIR-CONDITIONING, CORNICING AND BEING IMMACULATEDLY PRESENTED AND MUCH IMPROVED BY THE PRESENT OWNERS, THIS PROPERTY NEEDS TO BE VIEWED TO FULLY APPRECIATE ALL THAT IT HAS TO OFFER. THE COMPLEX IS EXCEPTIONALLY WELL MAINTAINED WITH TWO POOLS PLUS AN ADDITIONAL CHILDREN'S POOL AND ALSO PADDLE TENNIS FACILITIES.

LA MAIRENA IS AN EXCLUSIVE URBANISATION SET HIGH ABOVE THE MIJAS AND MARBELLA COASTLINE AND REKNOWNED FOR IT'S INTERNATIONAL GERMAN SCHOOL, ECOS COLLEGE AND THE HOFSAESS TENNIS ACADEMY.



Eigenschaften:

Merkmale

Überdachte Terrasse
Private Terrasse
Lagerraum
Privatem Badezimmer
Marmorböden
Doppelverglasung
Einbauschränke
Allzweckraum
Glasfaser
Paddeltennis

Ansichten

Meer
Berg
Panorama
Land
Forest

Schwimmbad

Gemeinschaft
Kinderpool

Garten

Gemeinschaft

Versorgungsunternehmen

Elektrizität
Trinkwasser

Orientierung

Süd
Süd-Ost

Einstellung

In der Nähe von Golf
Siedlung
In der Nähe von Schulen
Land
Bergpueblo
In der Nähe des Waldes

Möbel

Optional

Sicherheit

Gated Complex
Alarmsystem
Sicher

Kategorie

Investition
Luxus
Wiederverkauf
Zeitgenössisch

Klimakontrolle

Klimaanlage
Kalte a/c
Heiße A/C.

Zustand

Exzellent

Küche

Voll Ausgerüstet

Parken

Unter Tage
Privat
Mehr als eine